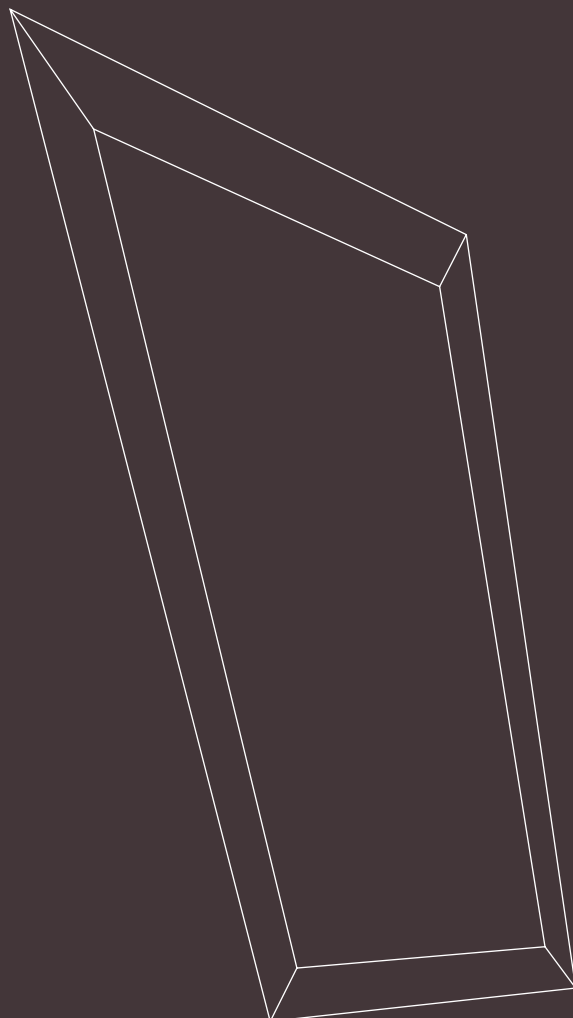
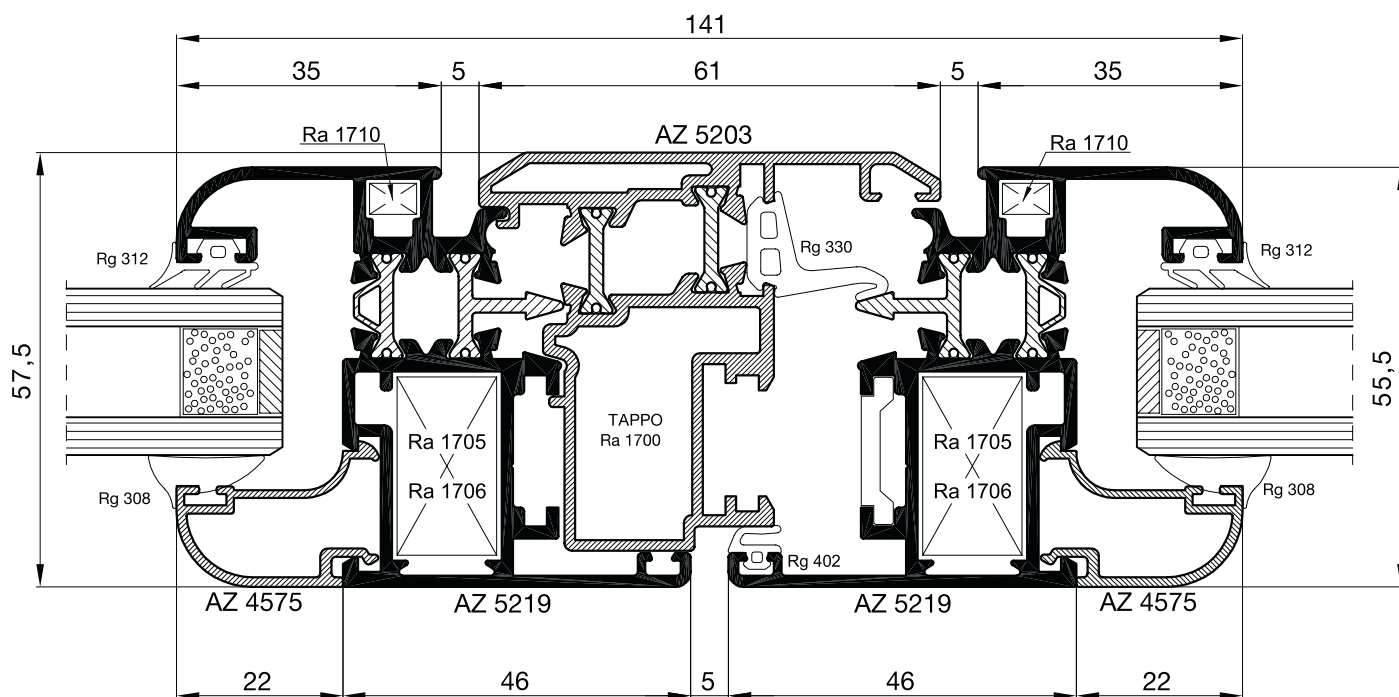
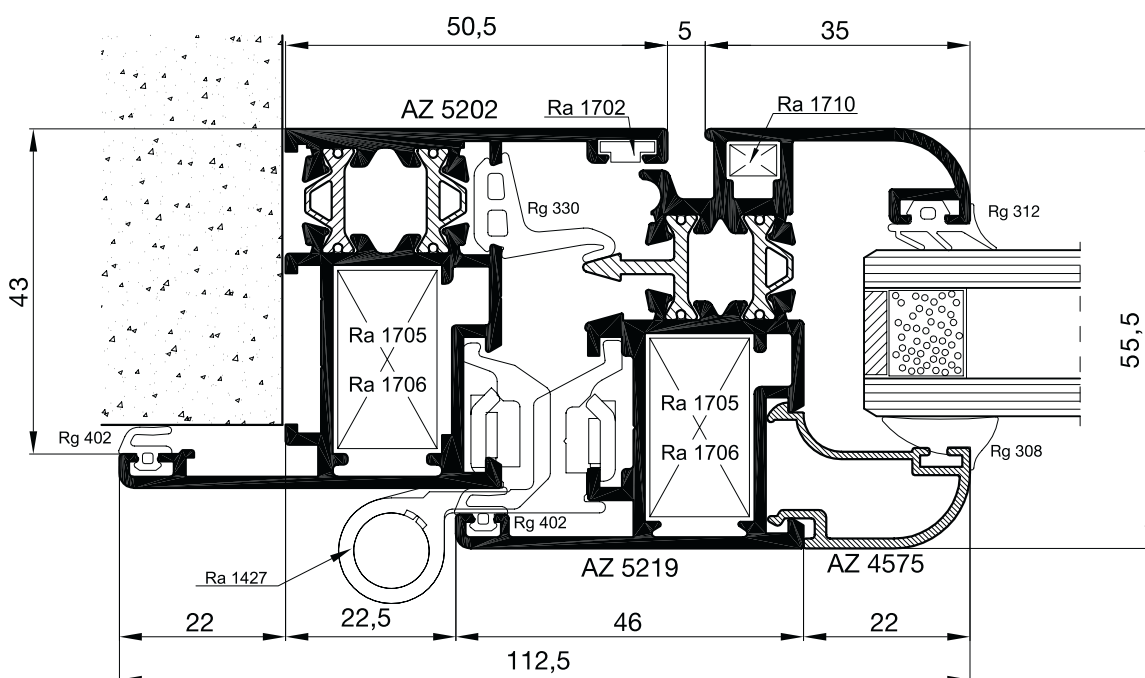
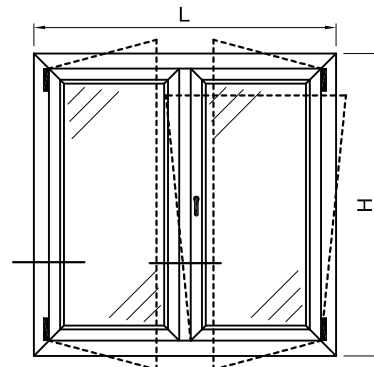


atlantis
serie 55TT

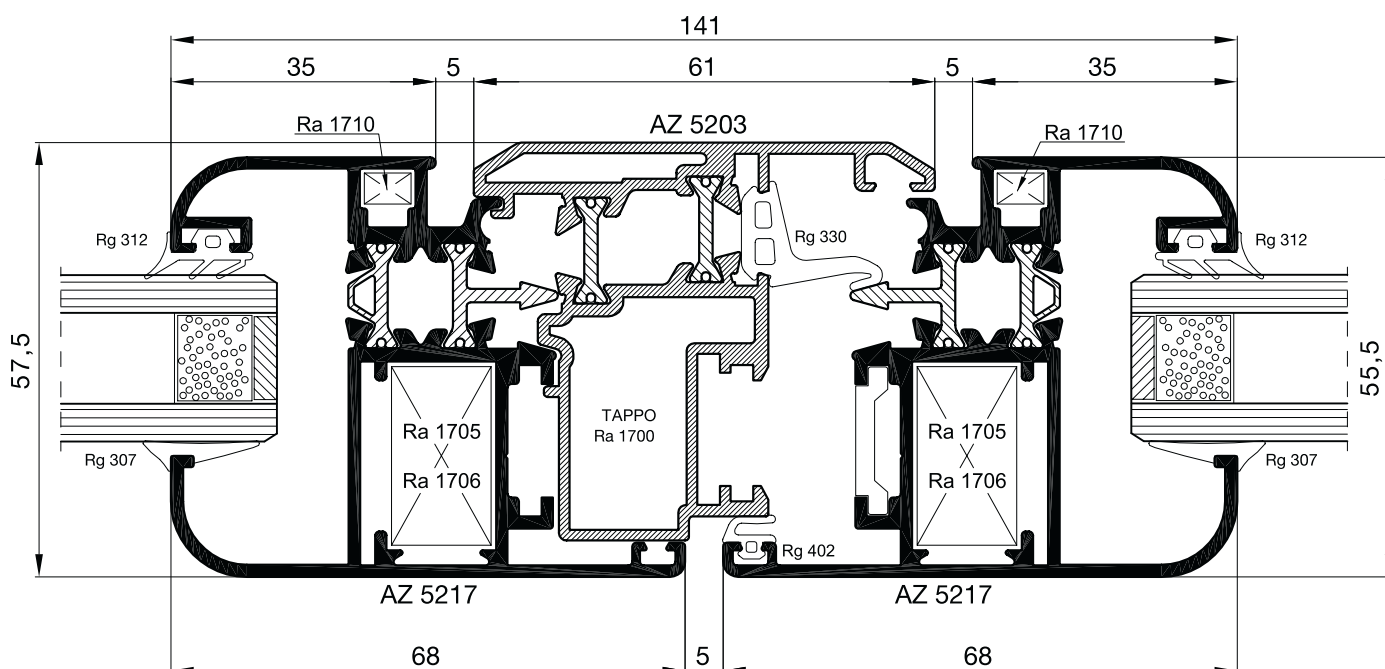
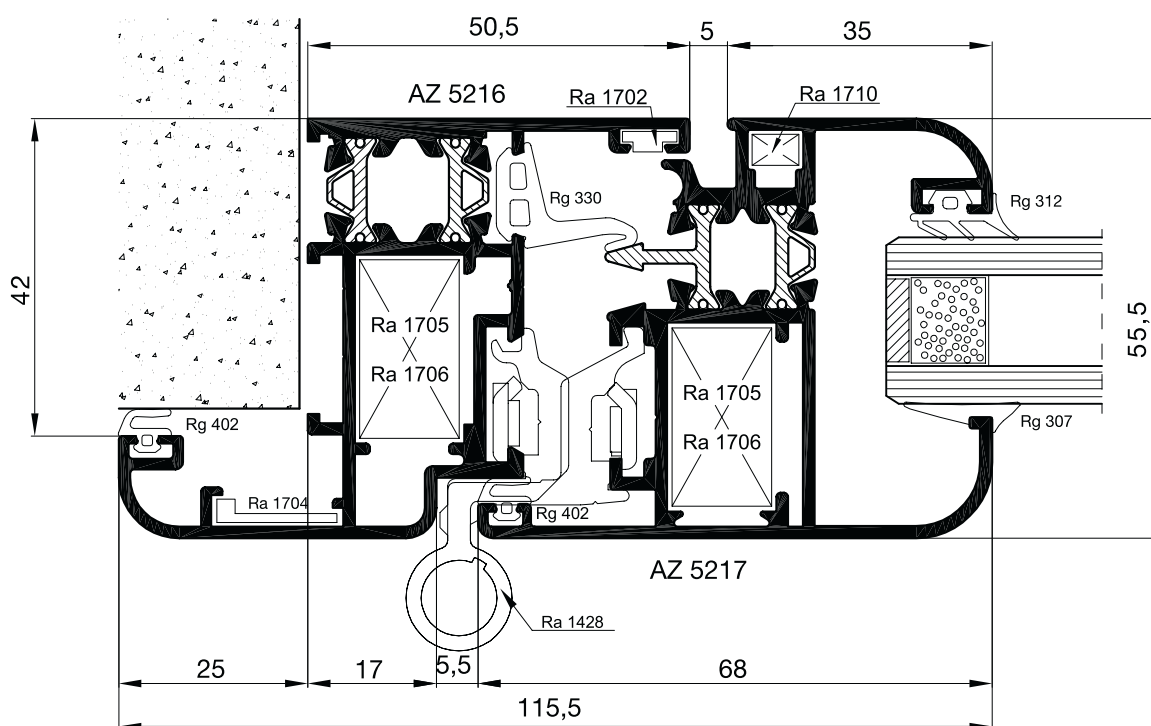
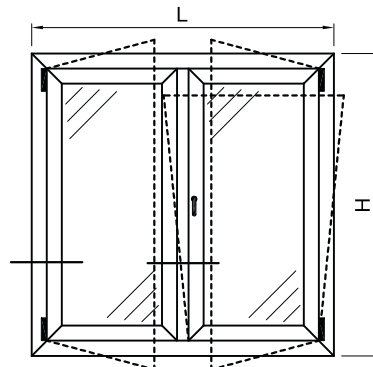


TO.MA. S.p.a.
ESTRUSIONE ALLUMINIO

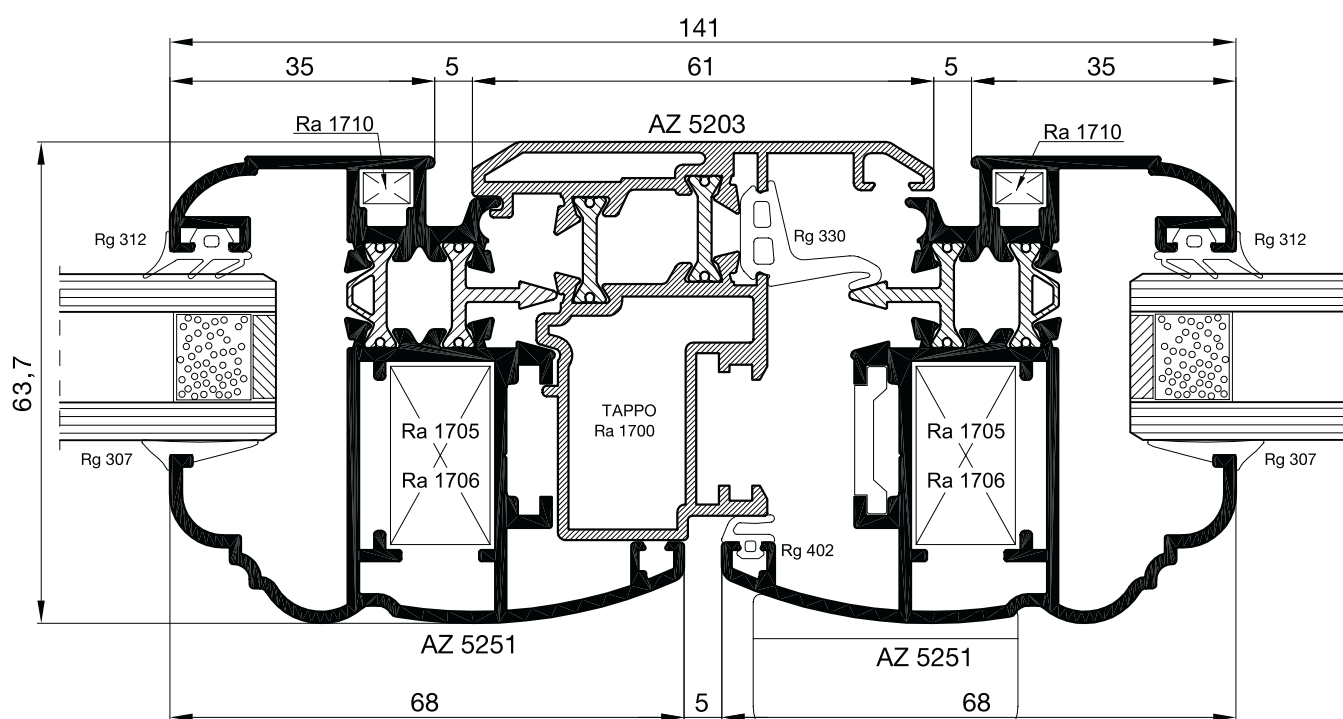
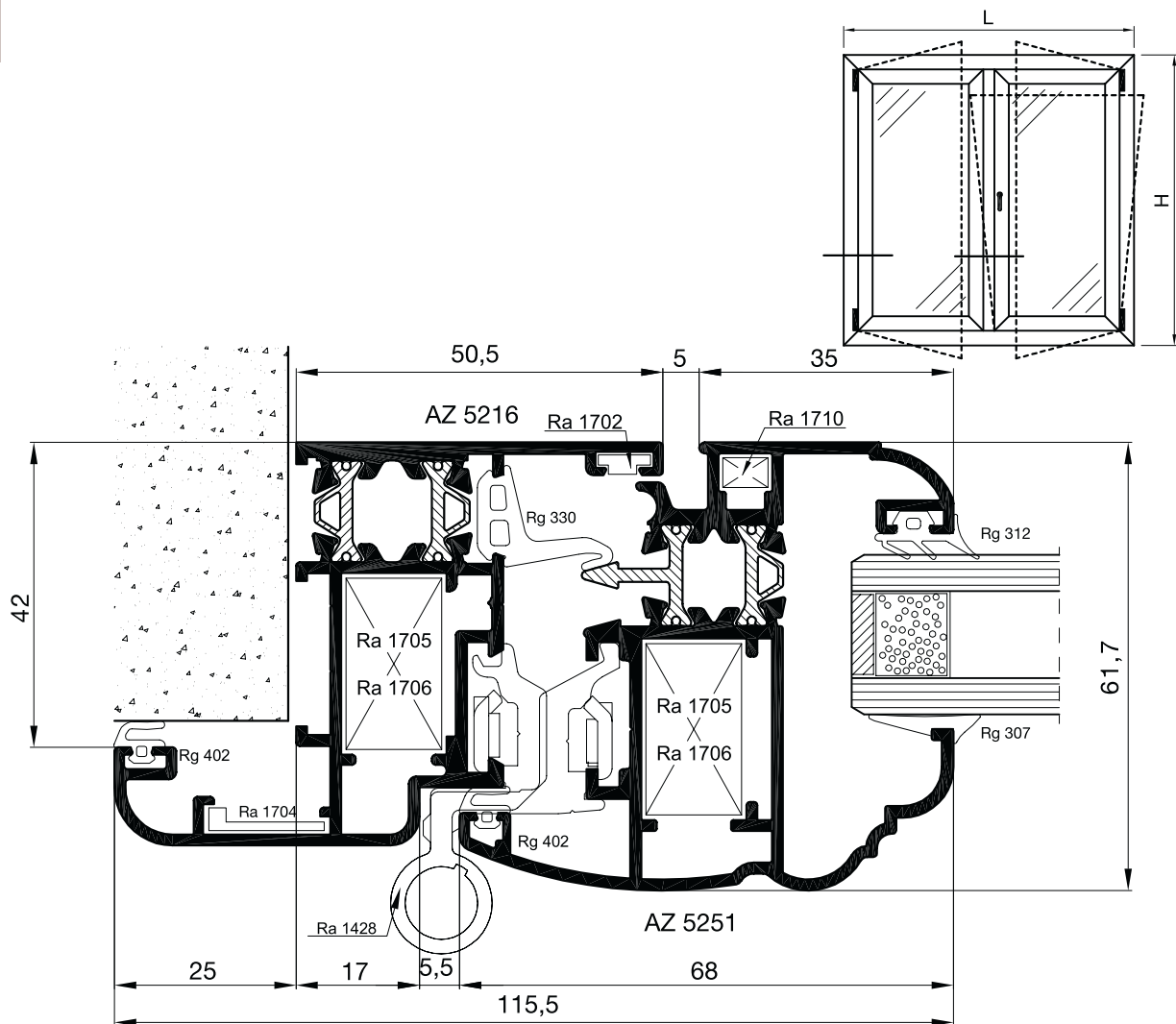
scala 1:1



scala 1:1

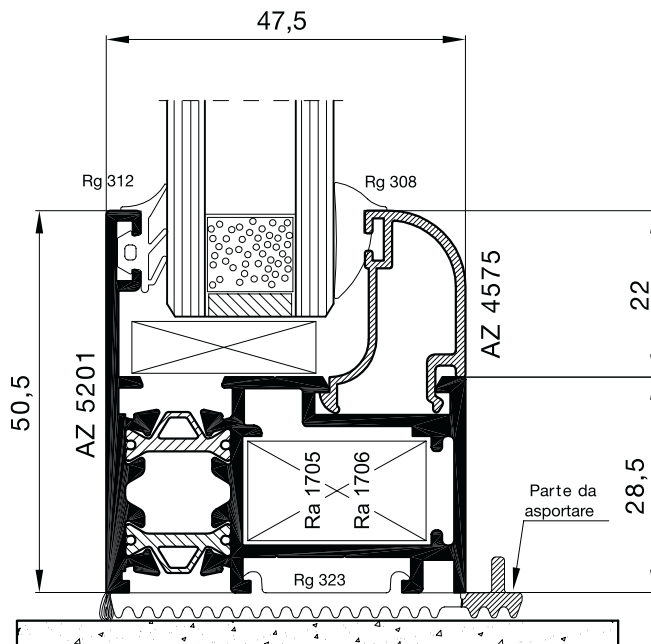
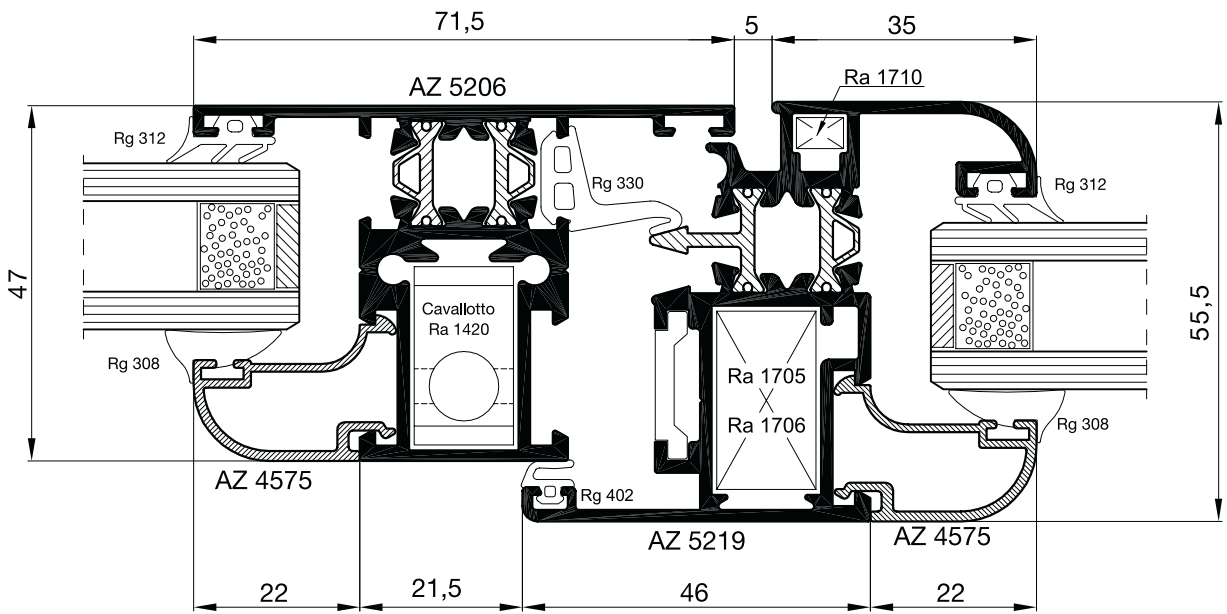
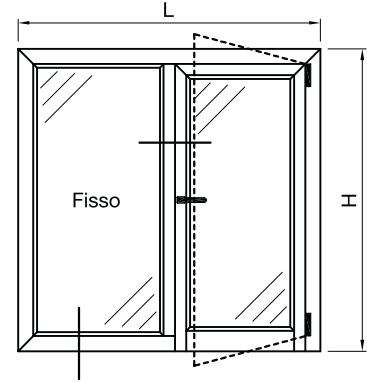


Finestra a due ante
- anta bombata con cornice -

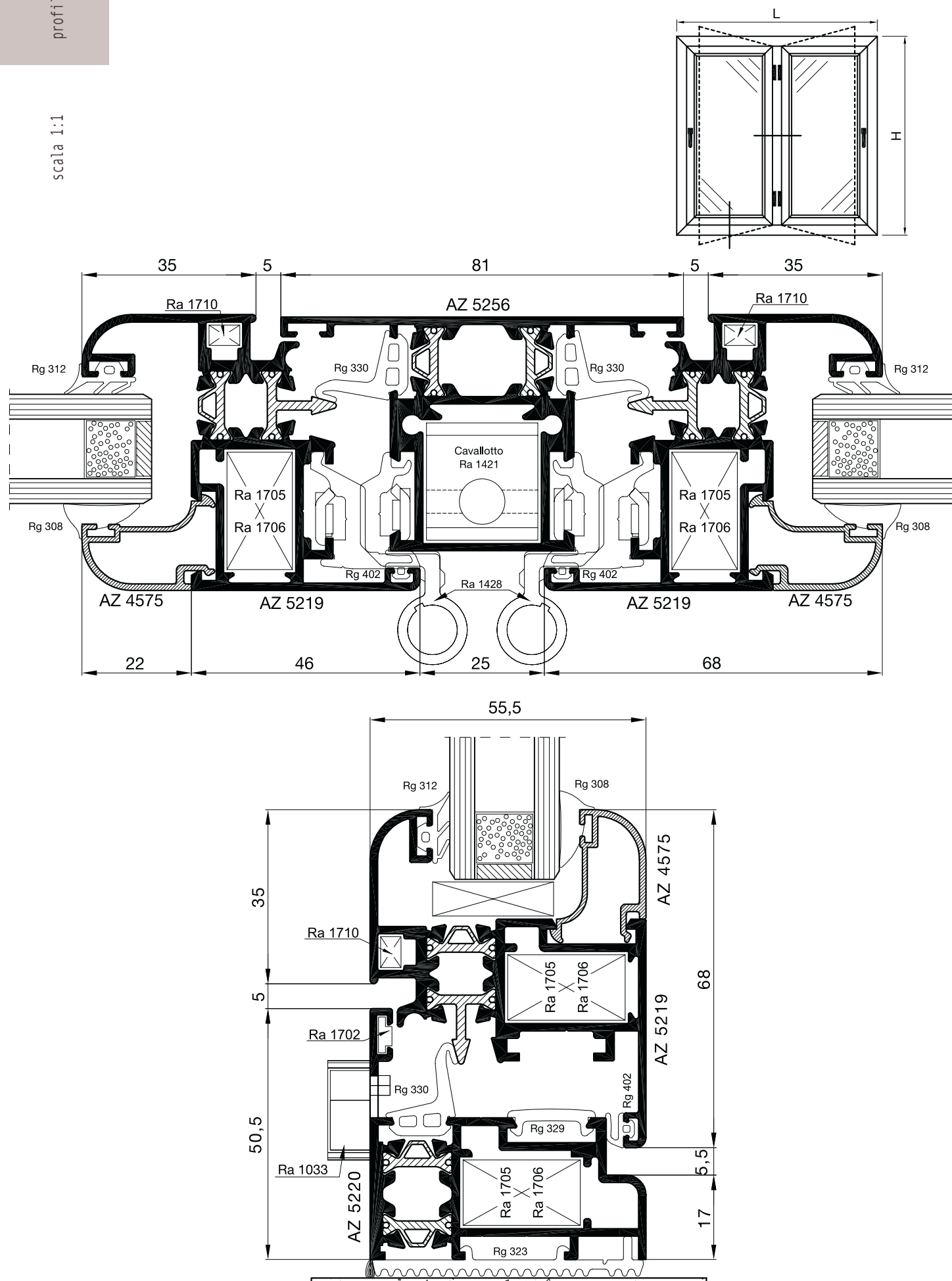


Cremonese "Dominga" Ra 1055

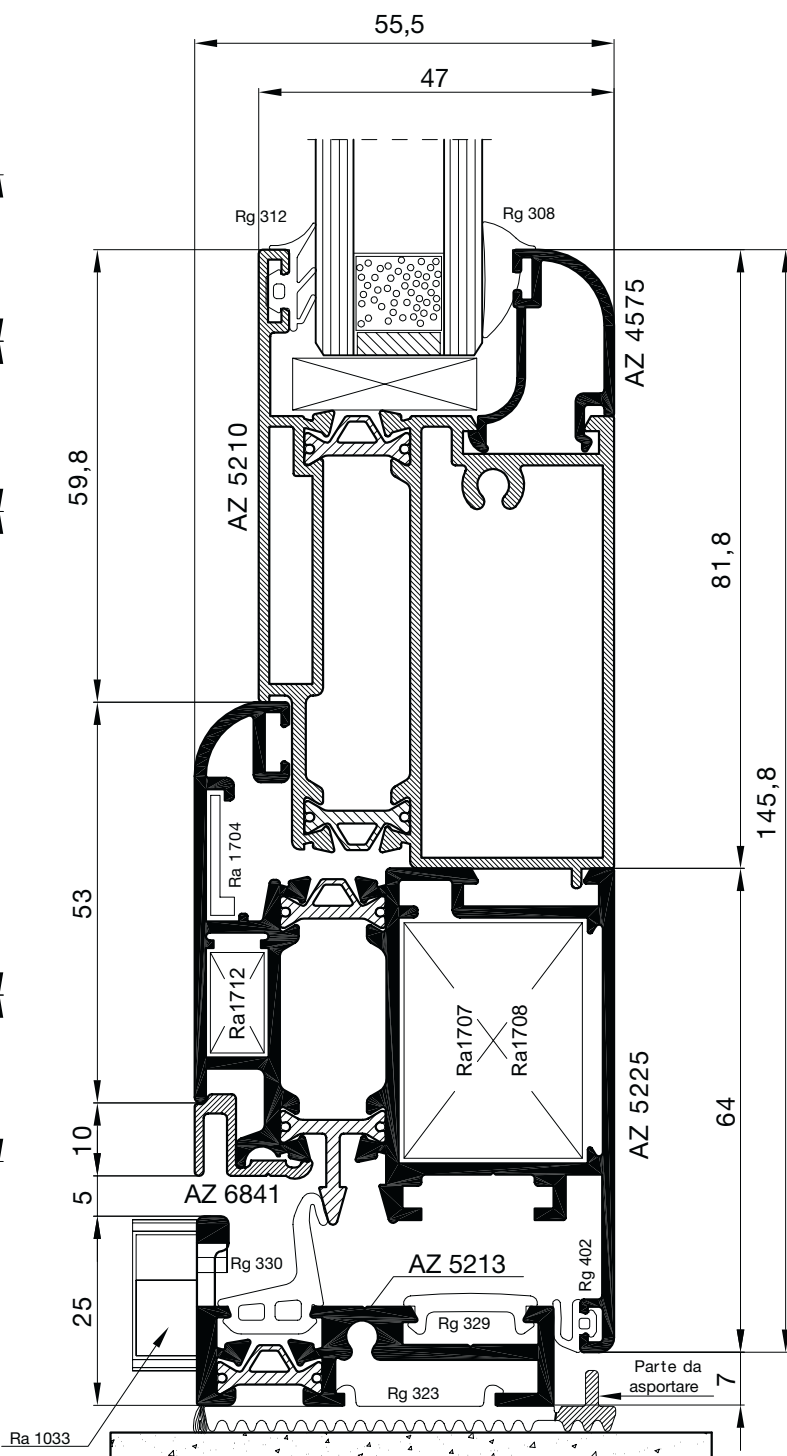
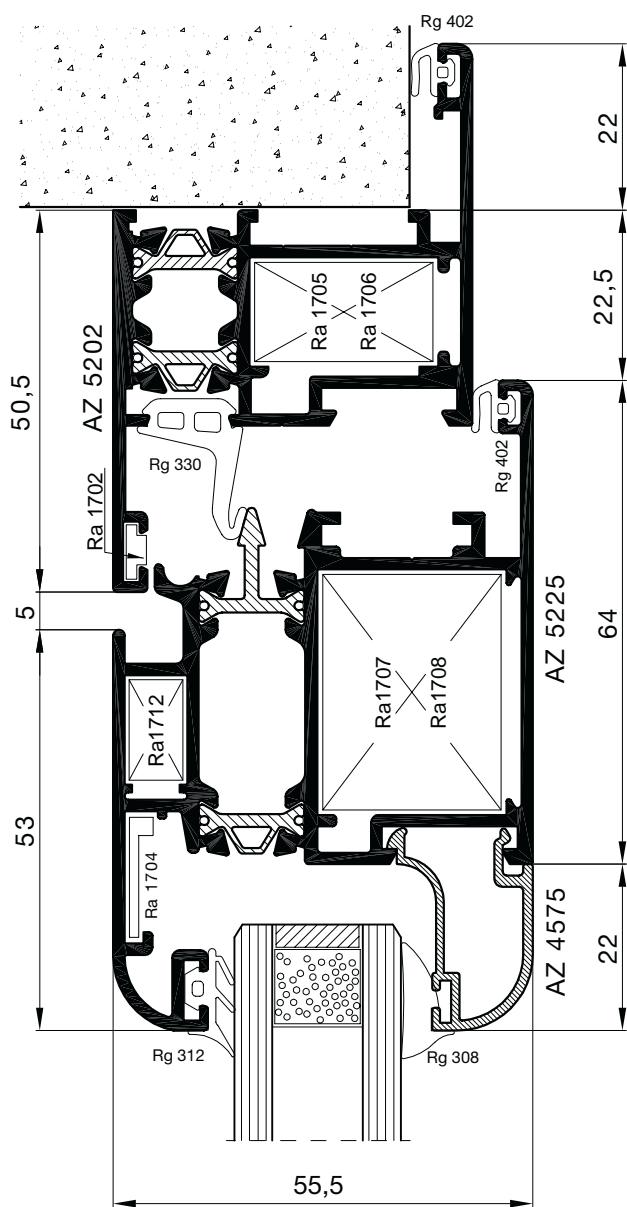
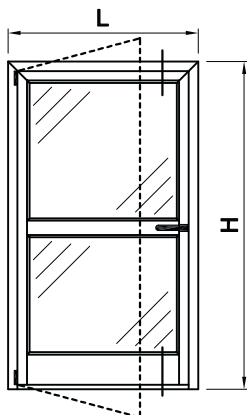
Finestra con laterale fisso



scala 1:1

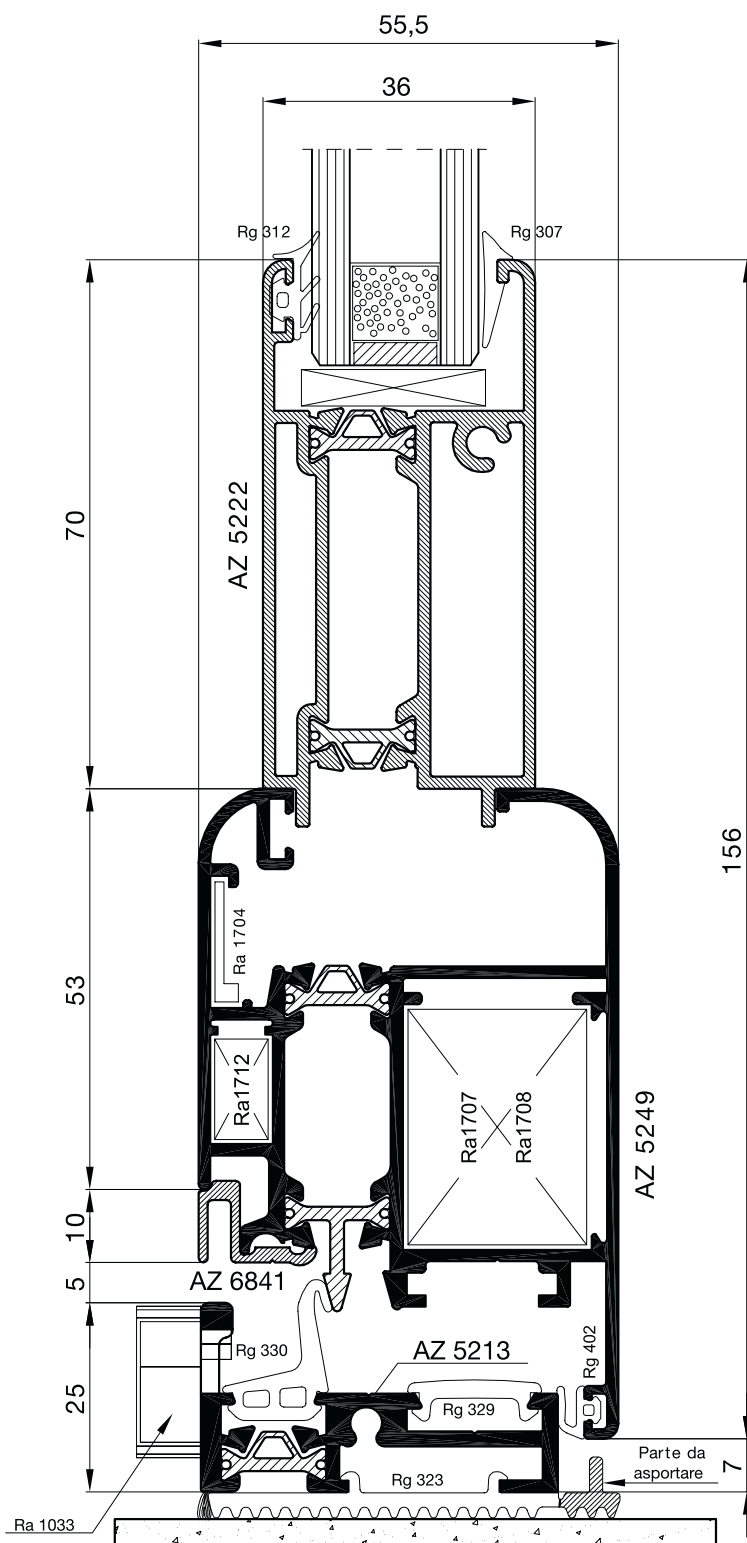
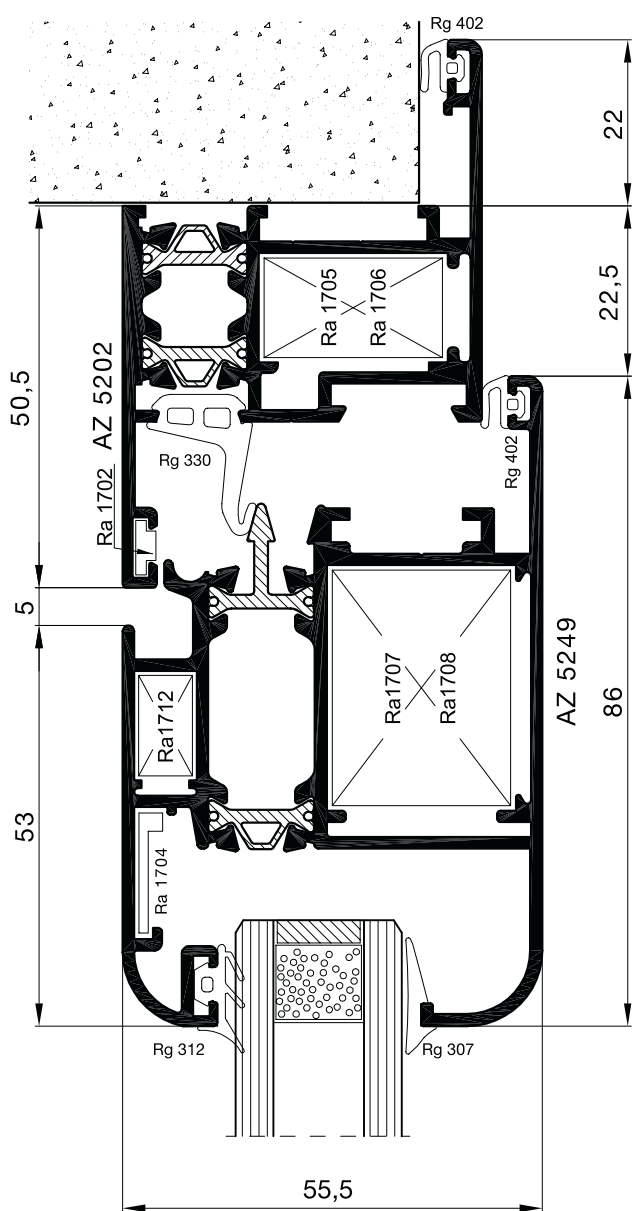
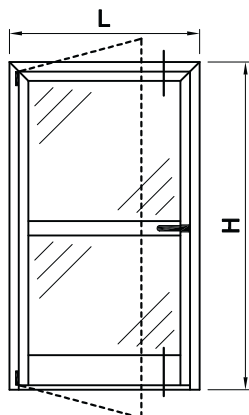


scala 1:1



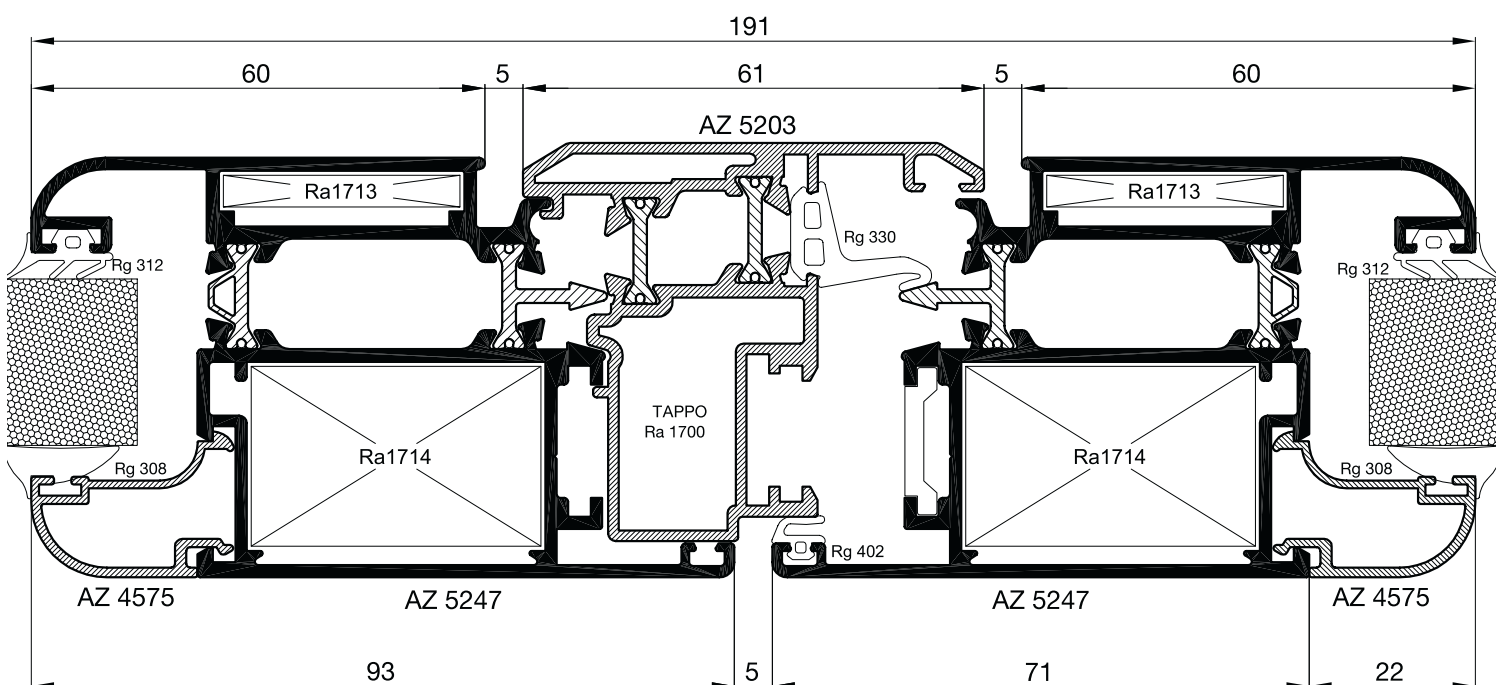
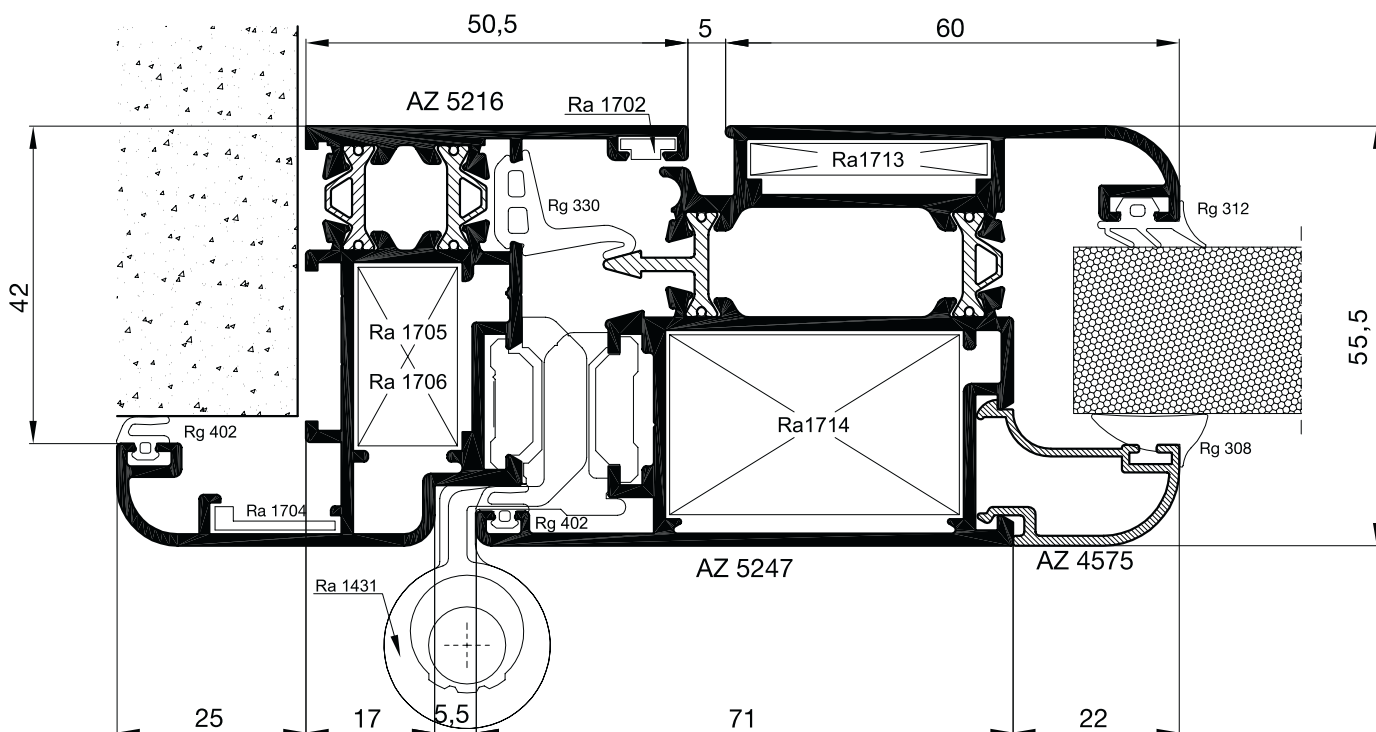
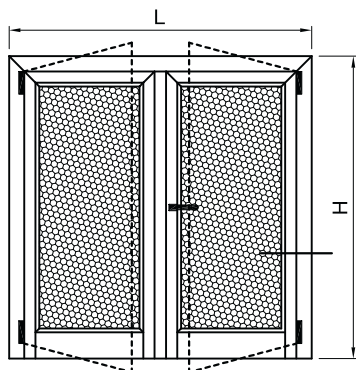


scala 1:1

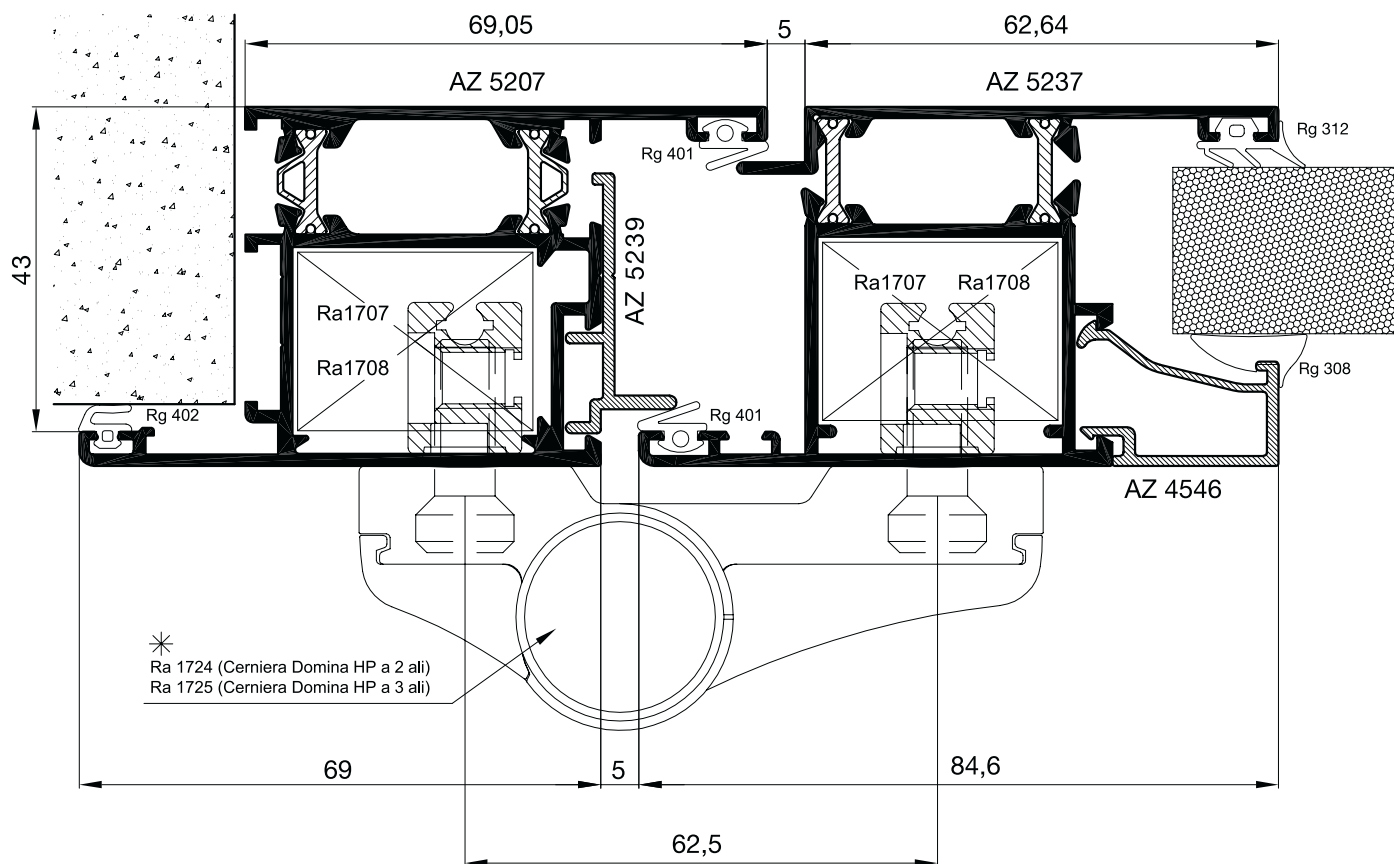
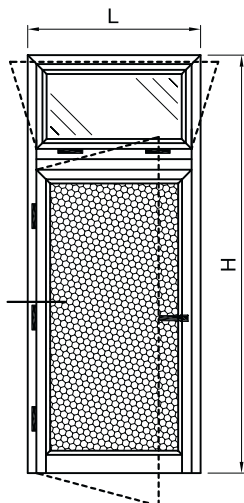


Portoncino a due ante a giunto aperto
- apertura interna -

scala 1:1



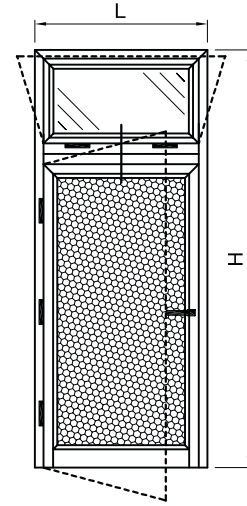
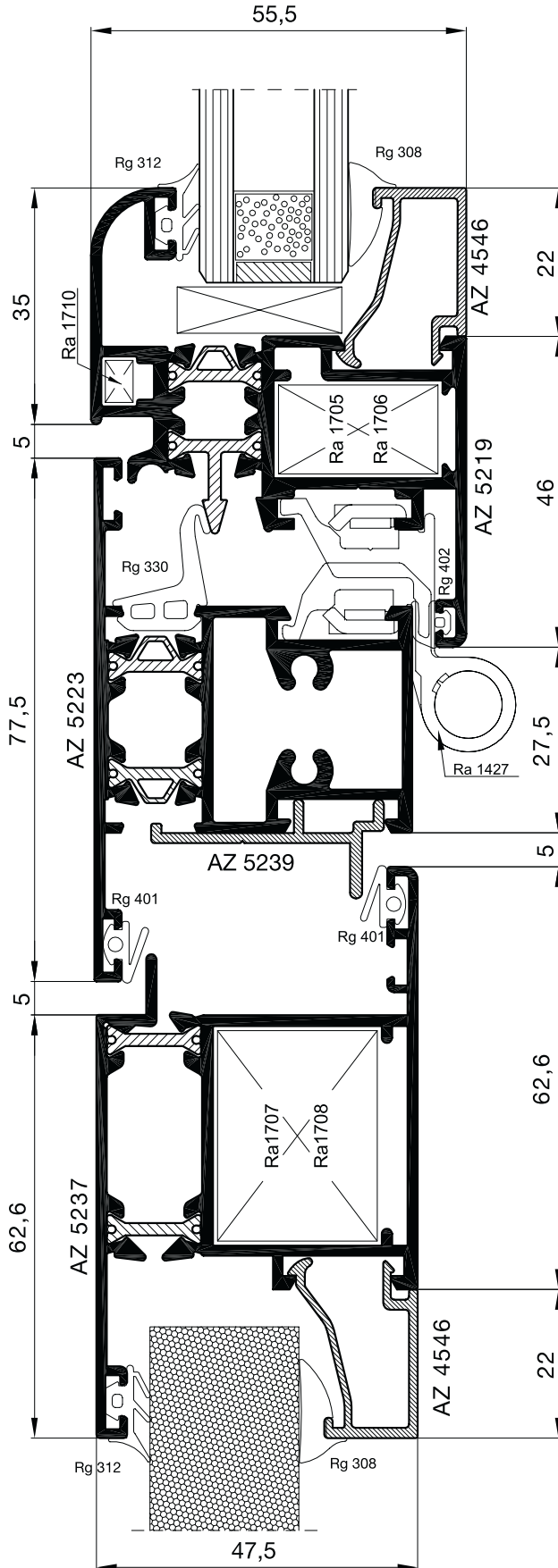
scala 1:1



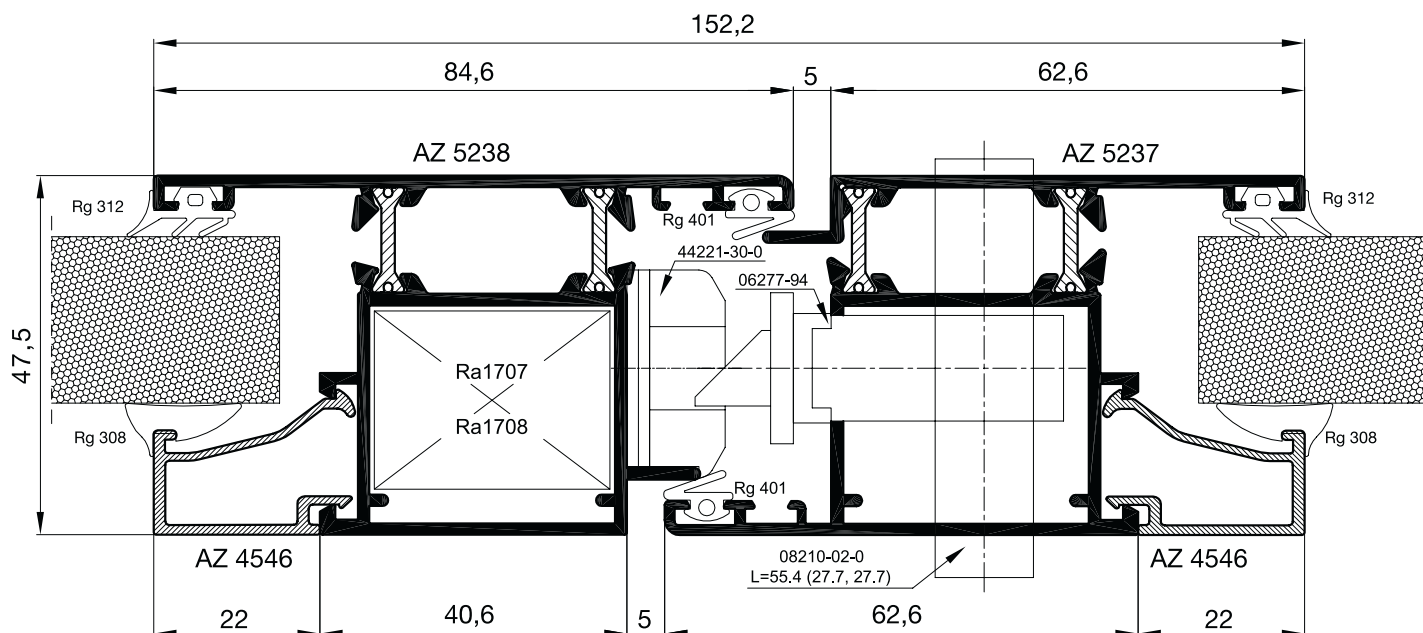
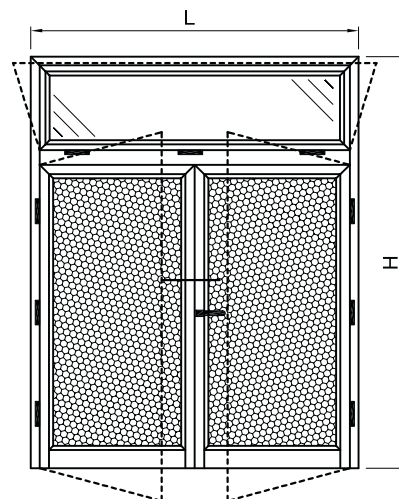
*
Ra 1724 (Cerniera Domina HP a 2 ali)
Ra 1725 (Cerniera Domina HP a 3 ali)

* Si applicano con dima Ra 1450

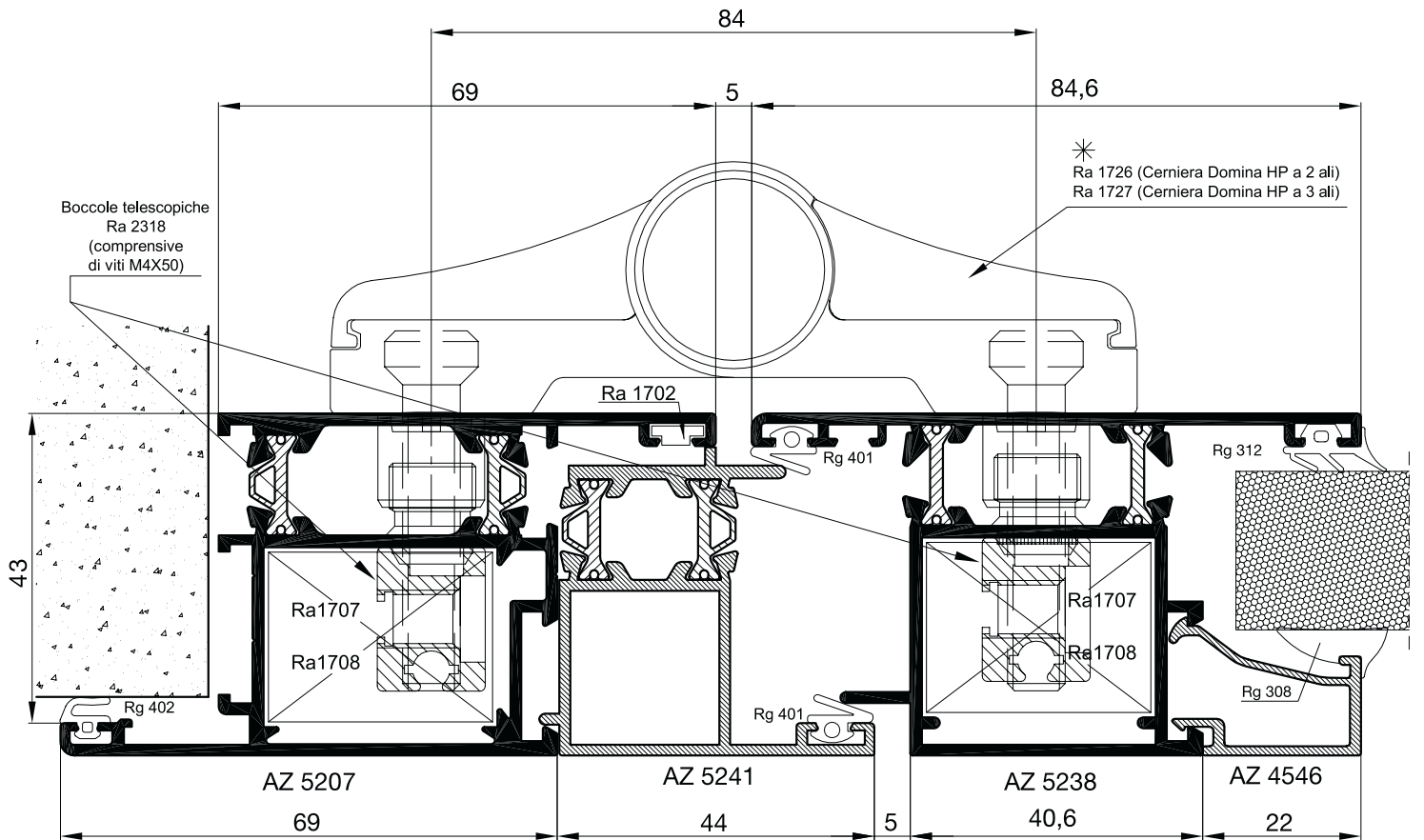
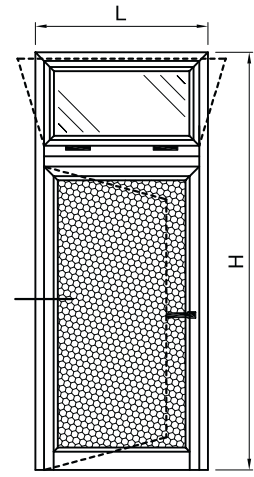
Portoncino a doppia battuta
- apertura interna con vasistas superiore -



scala 1:1

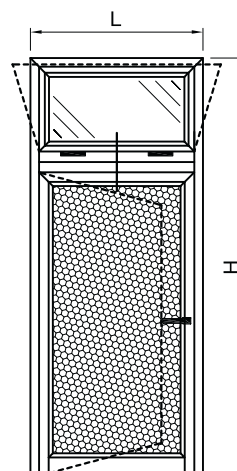
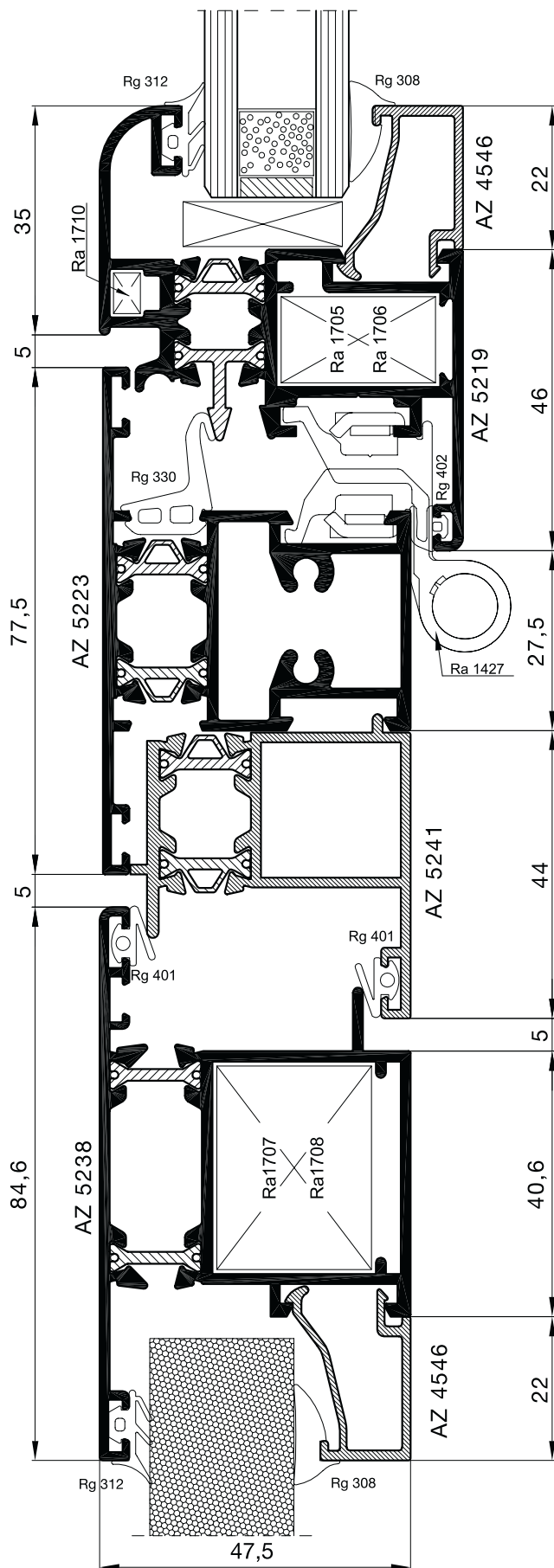


scala 1:1

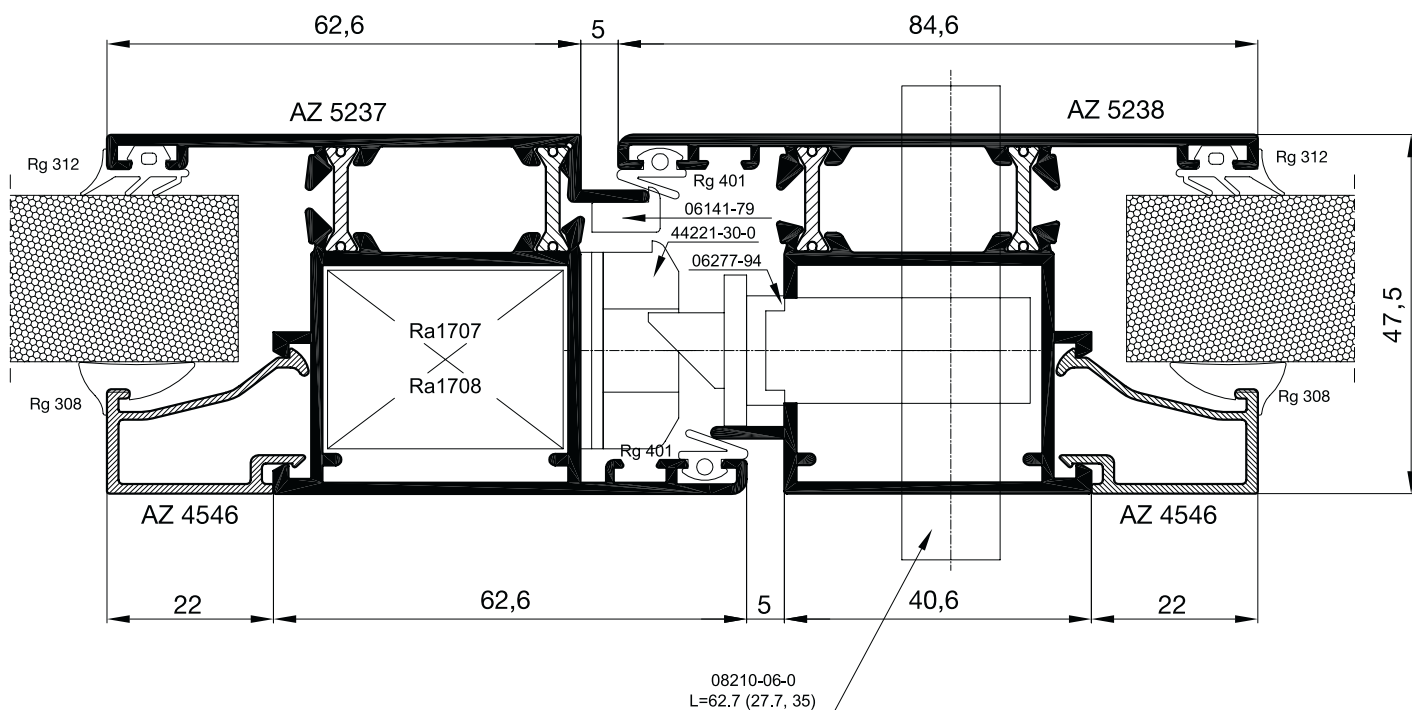
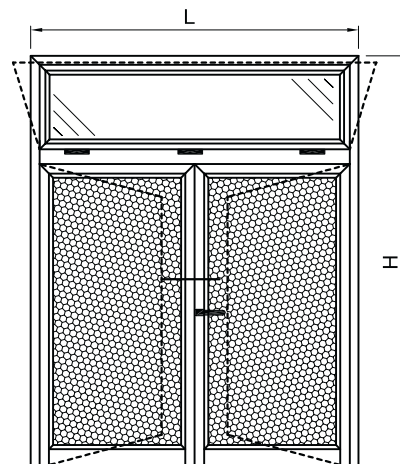


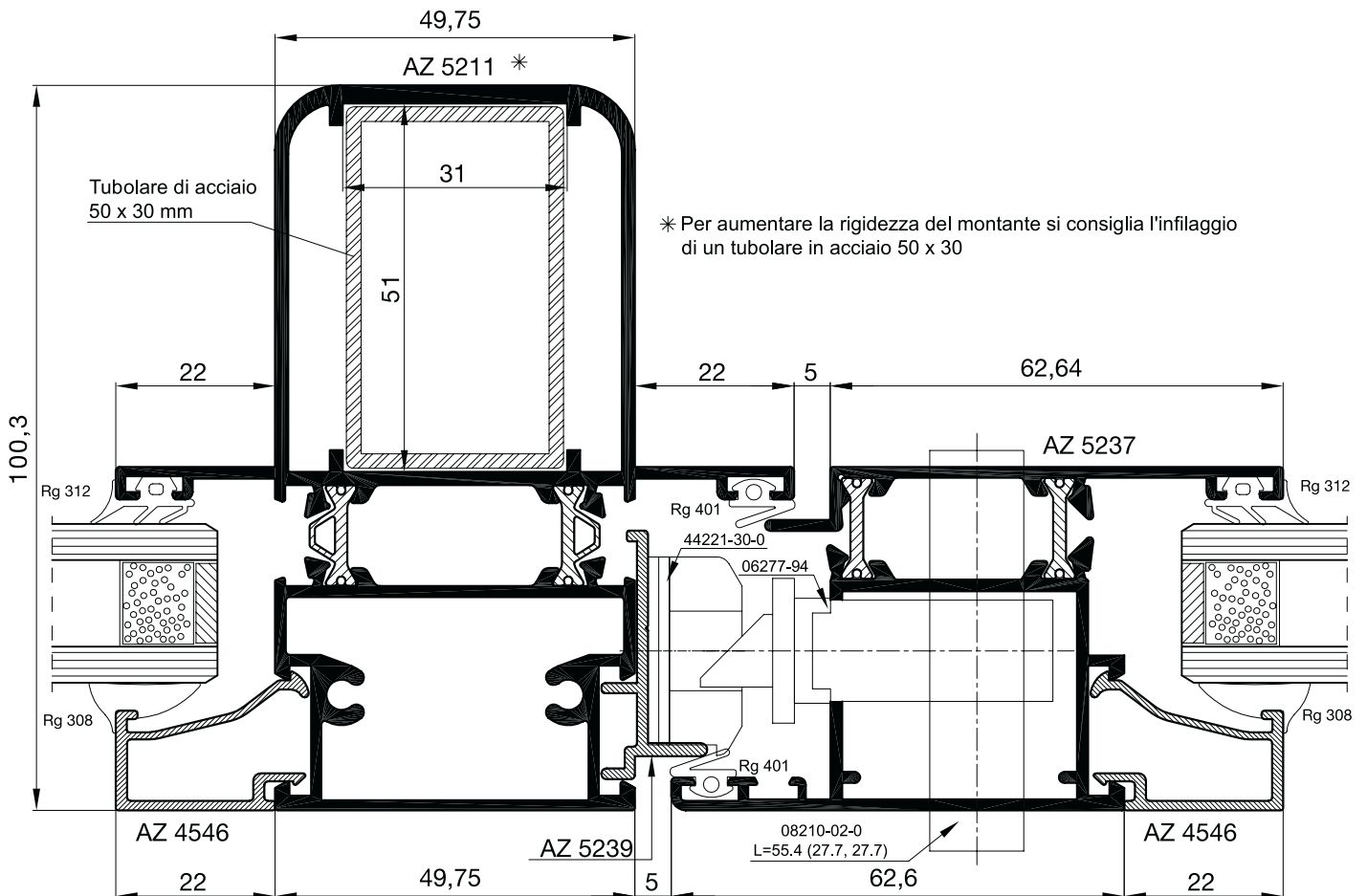
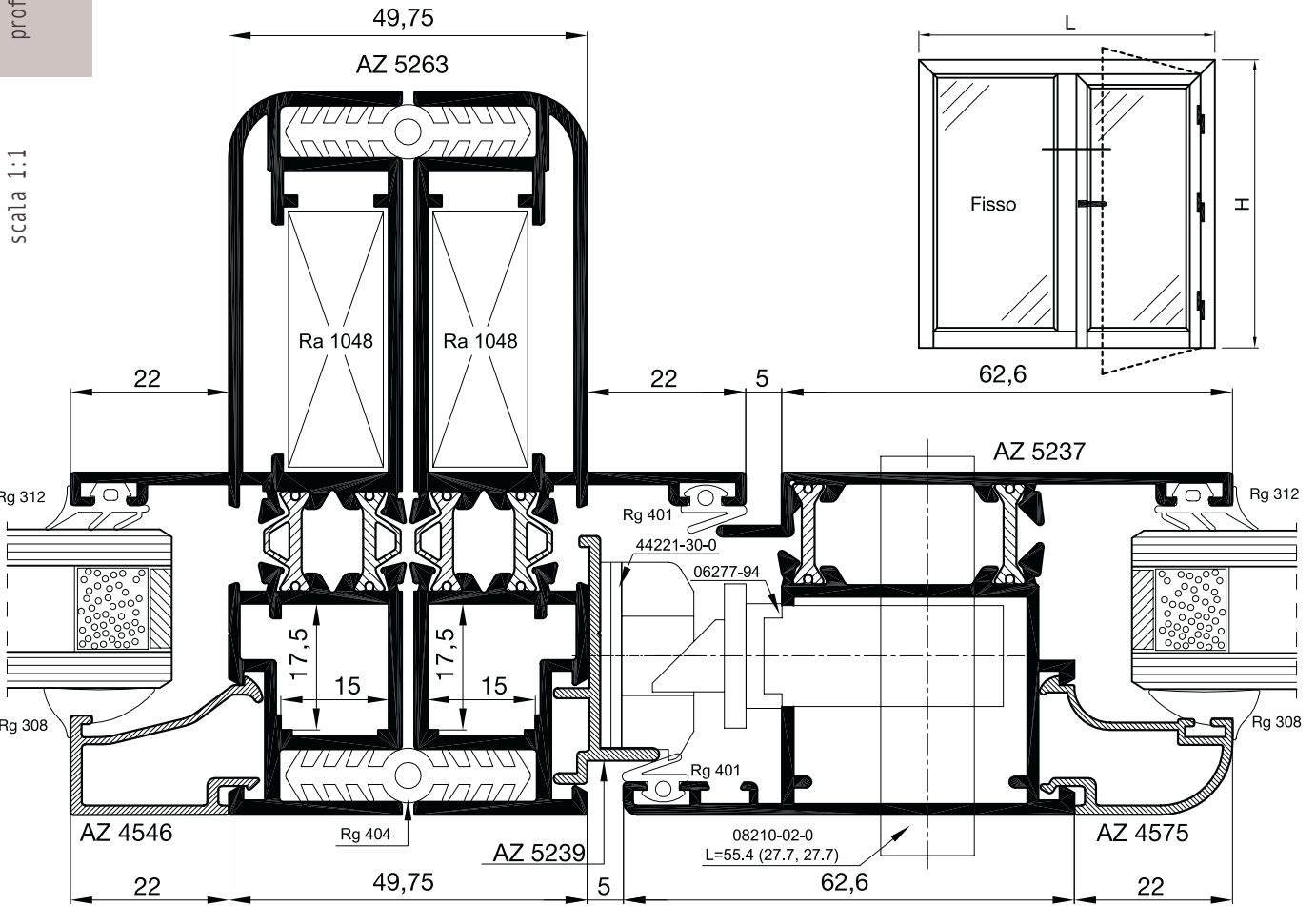
* Si applicano con dima Ra 1450

Portoncino a doppia battuta
- apertura esterna con vasistas superiore -



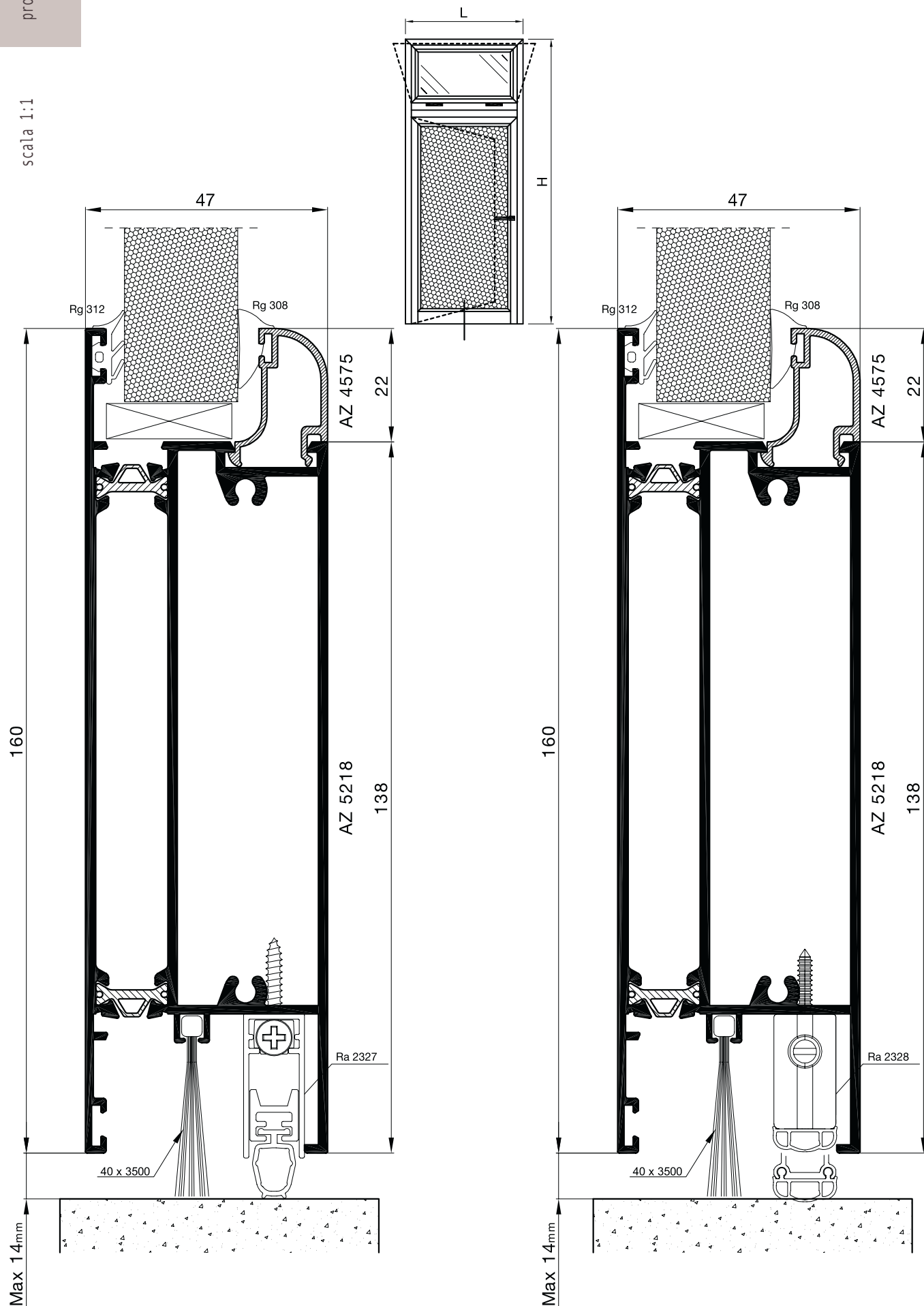
scala 1:1



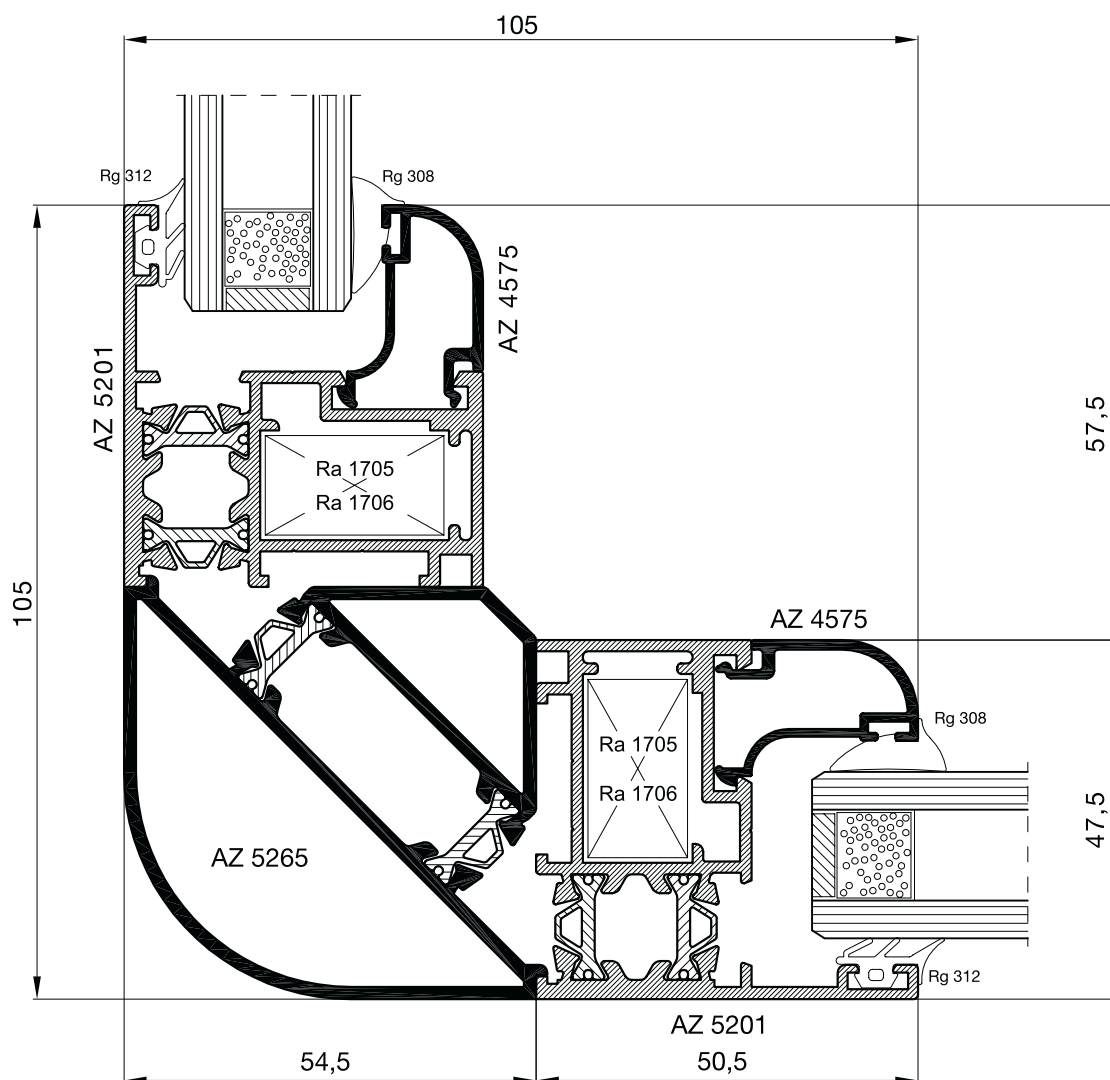
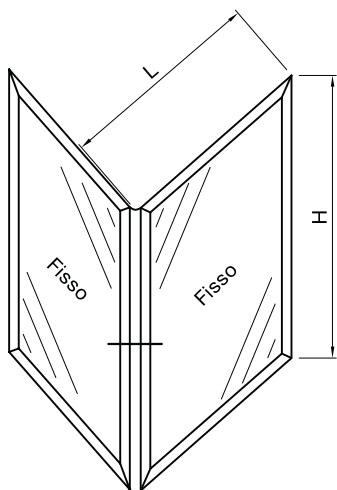


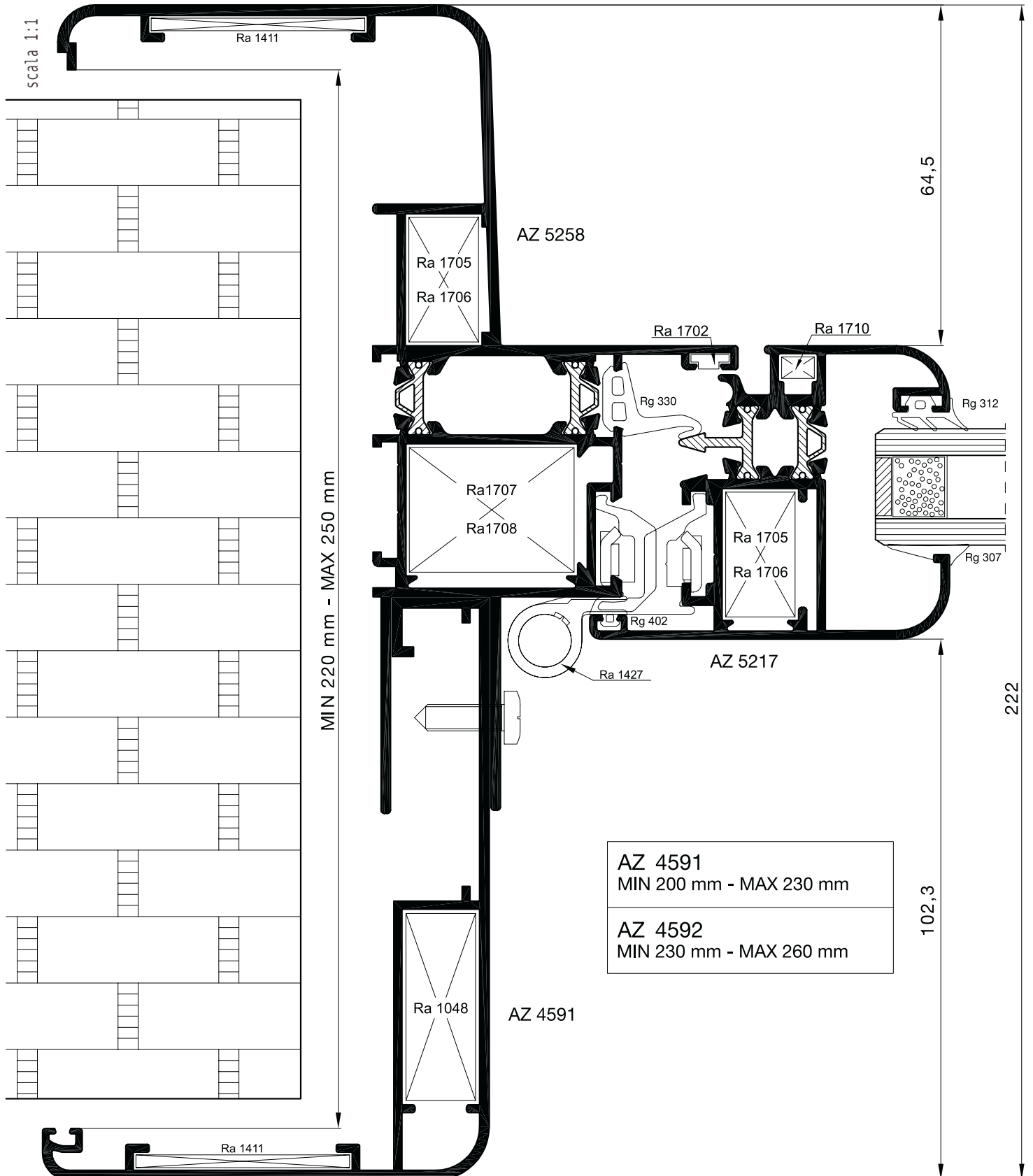


scala 1:1

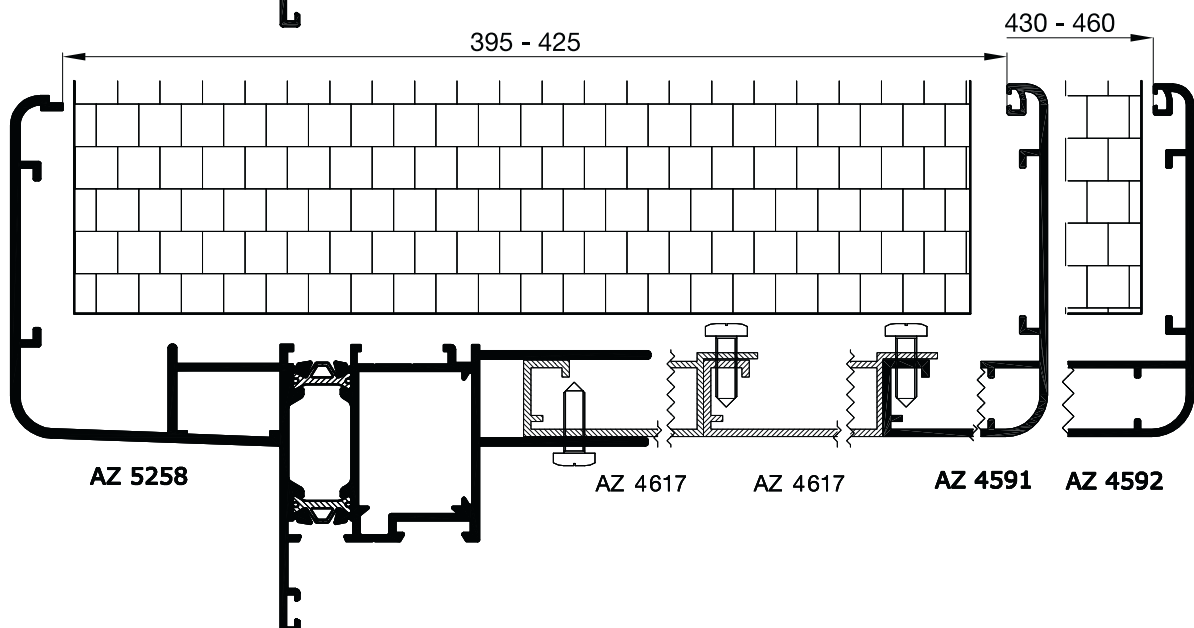
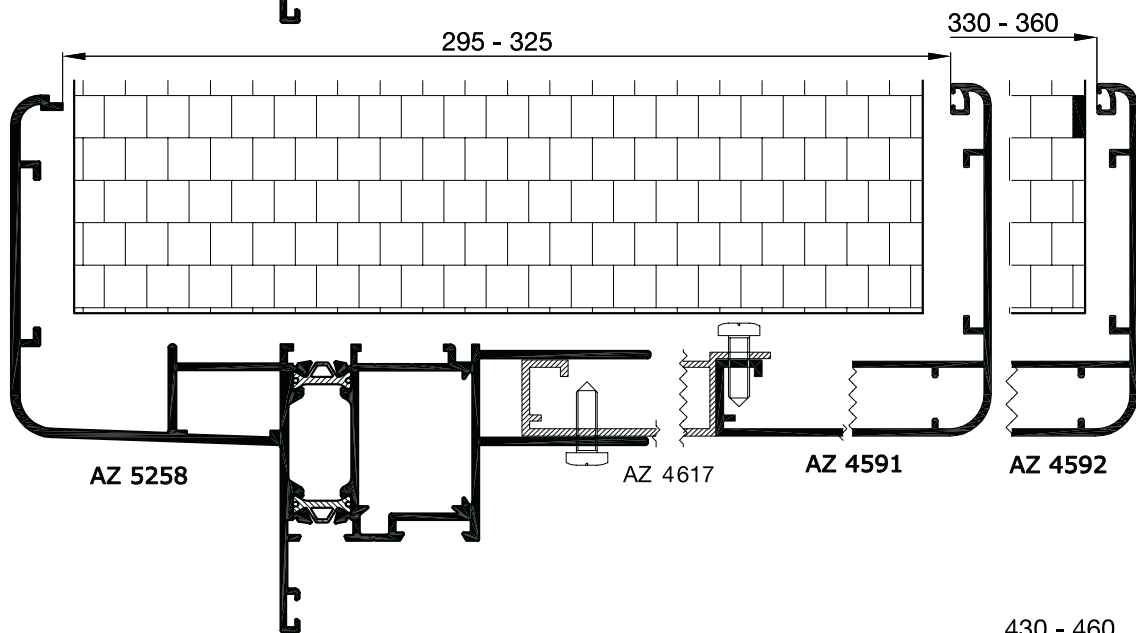
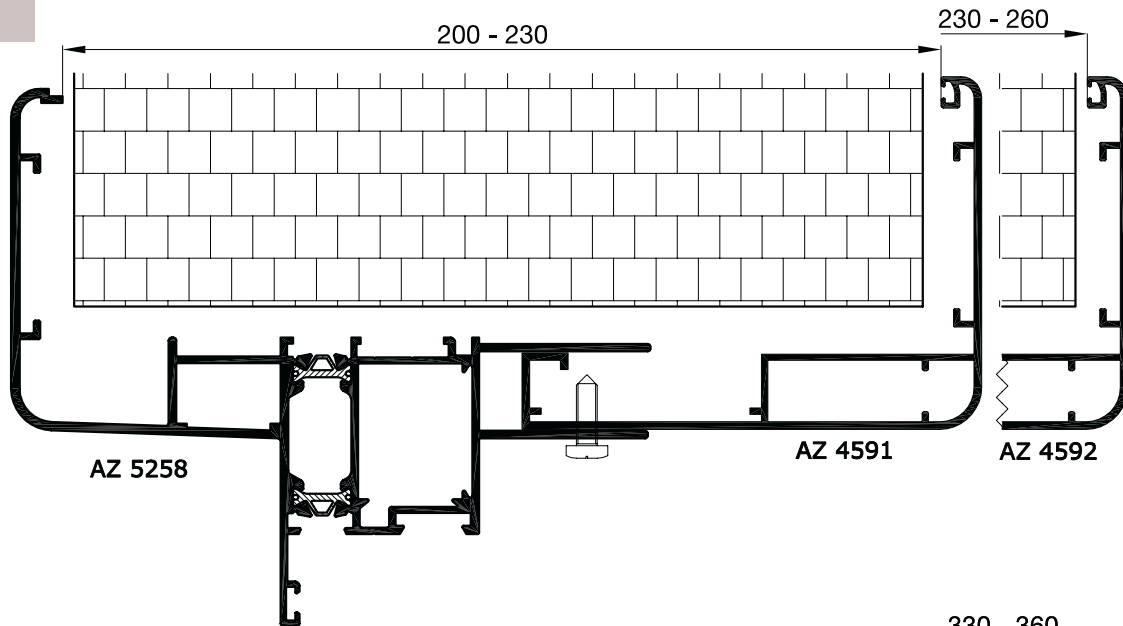


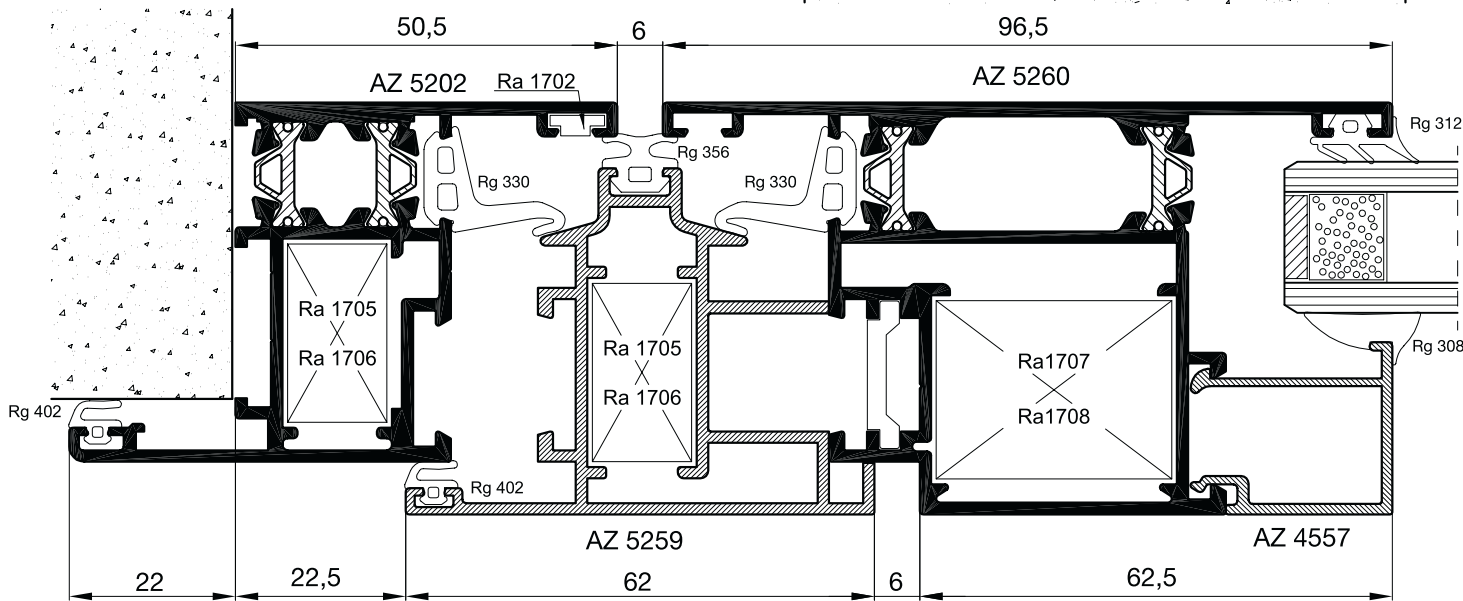
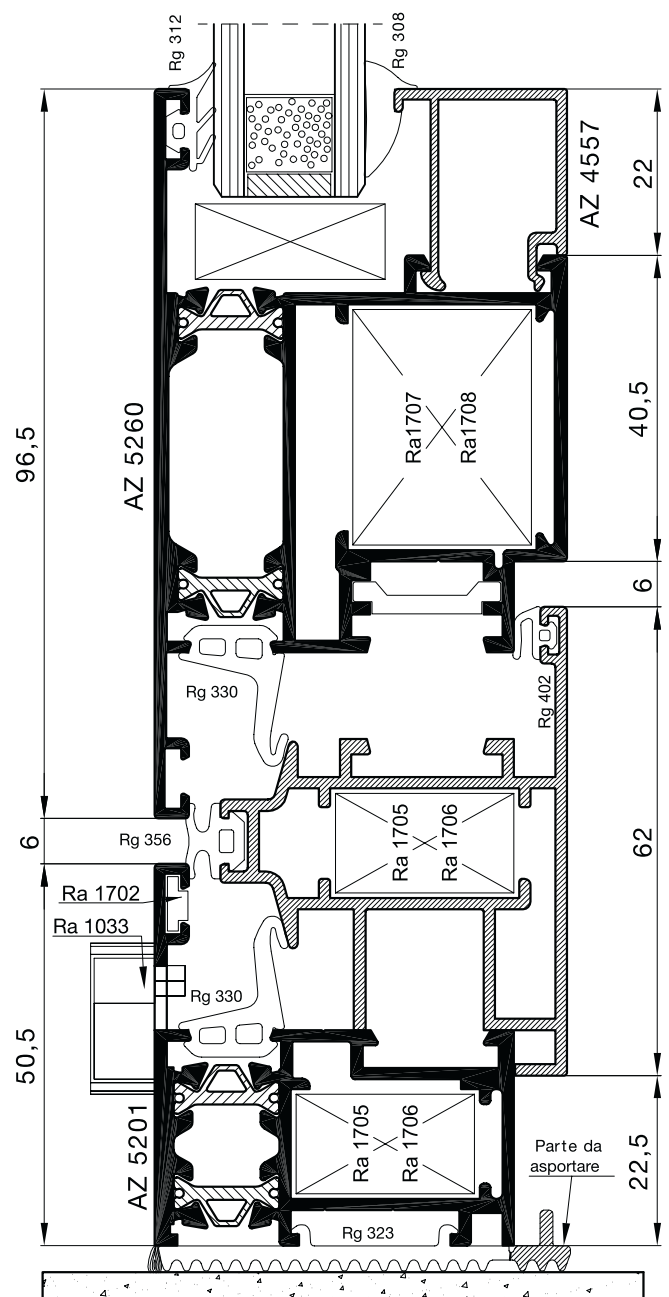
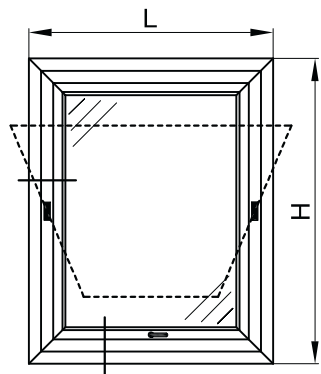
scala 1:1



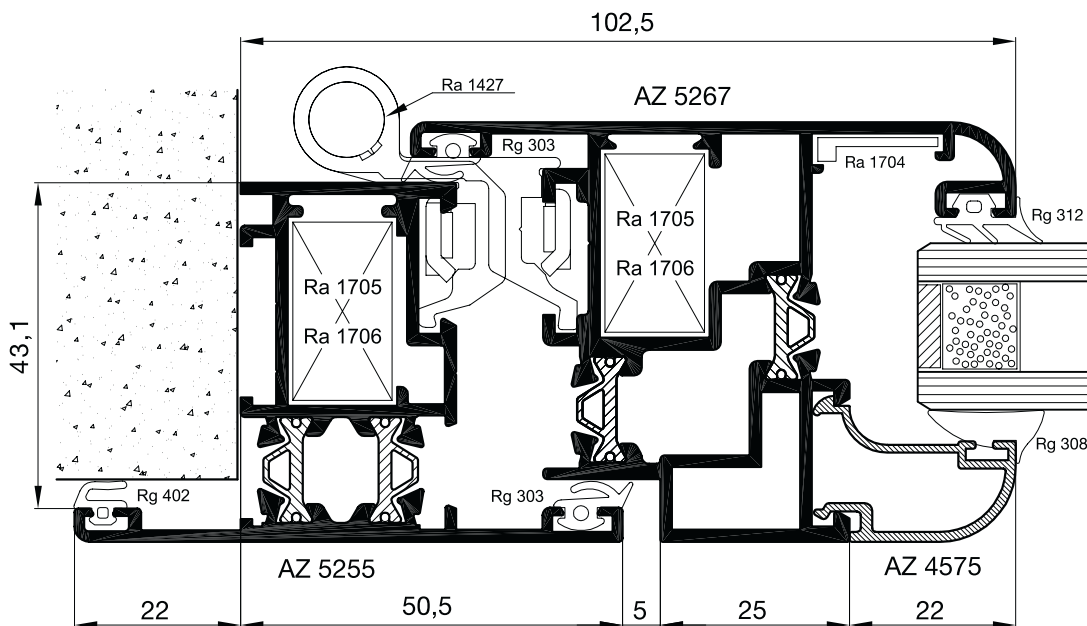
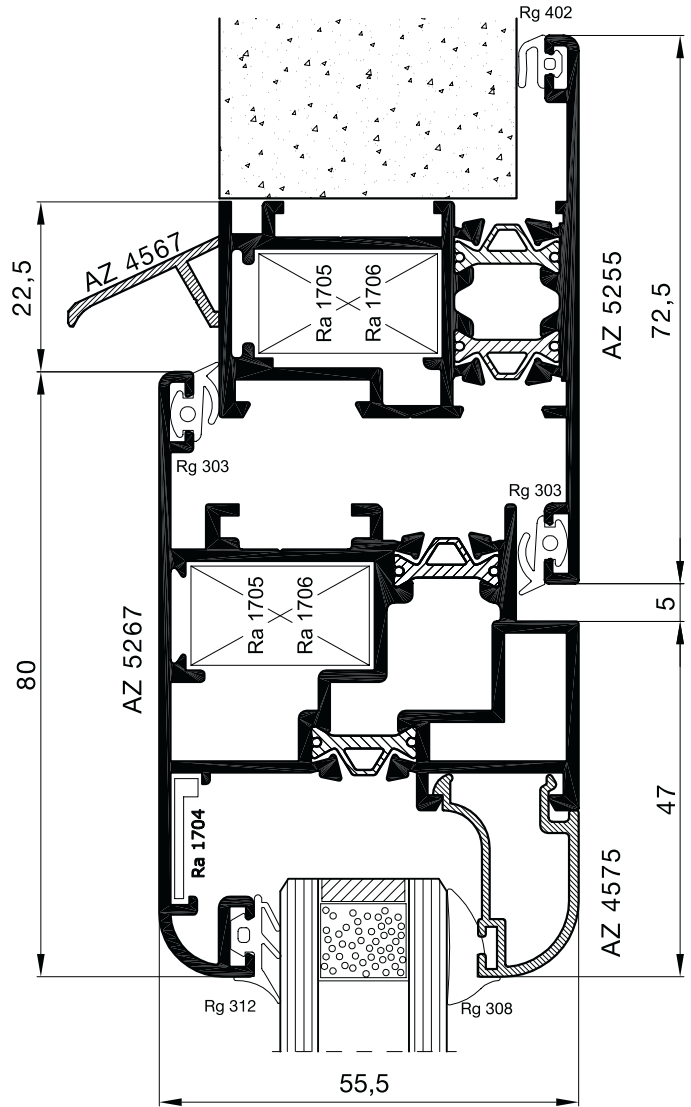
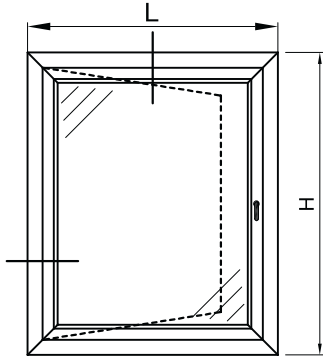


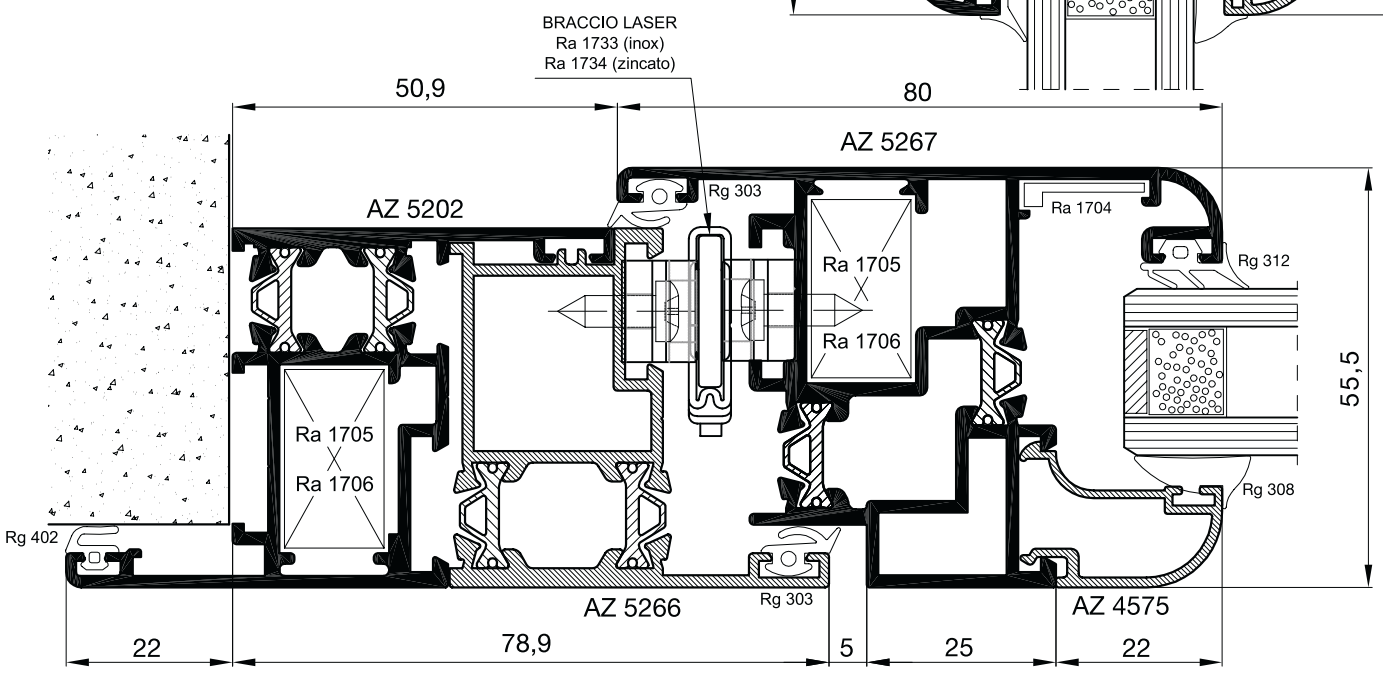
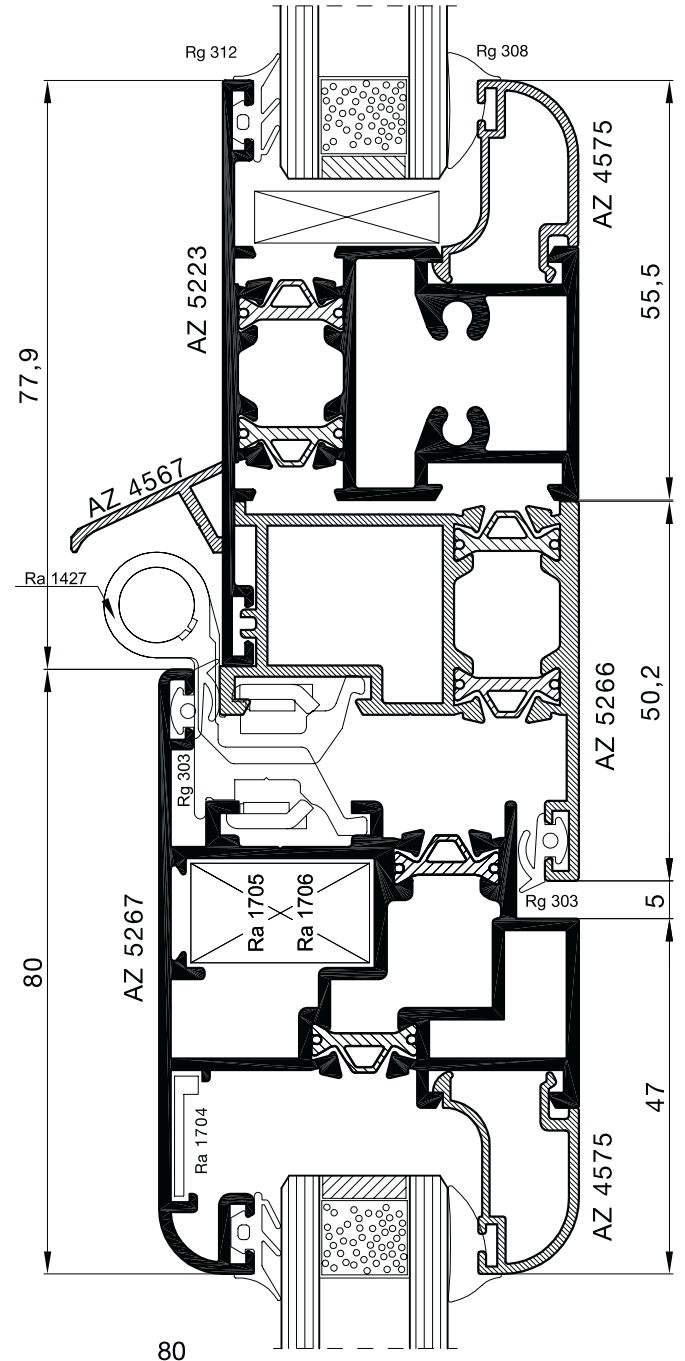
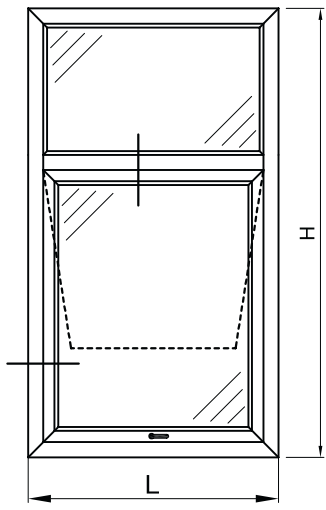
non in scala

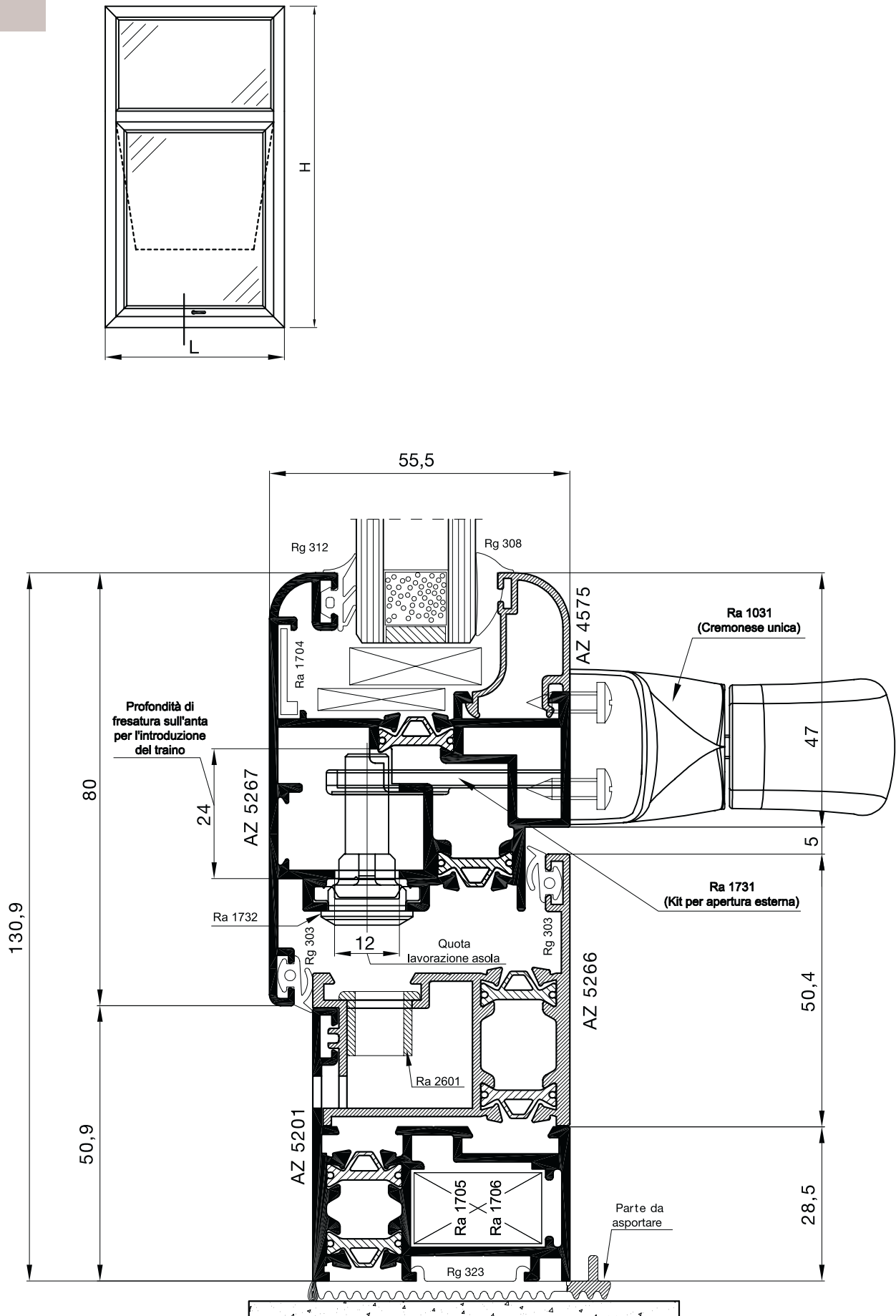


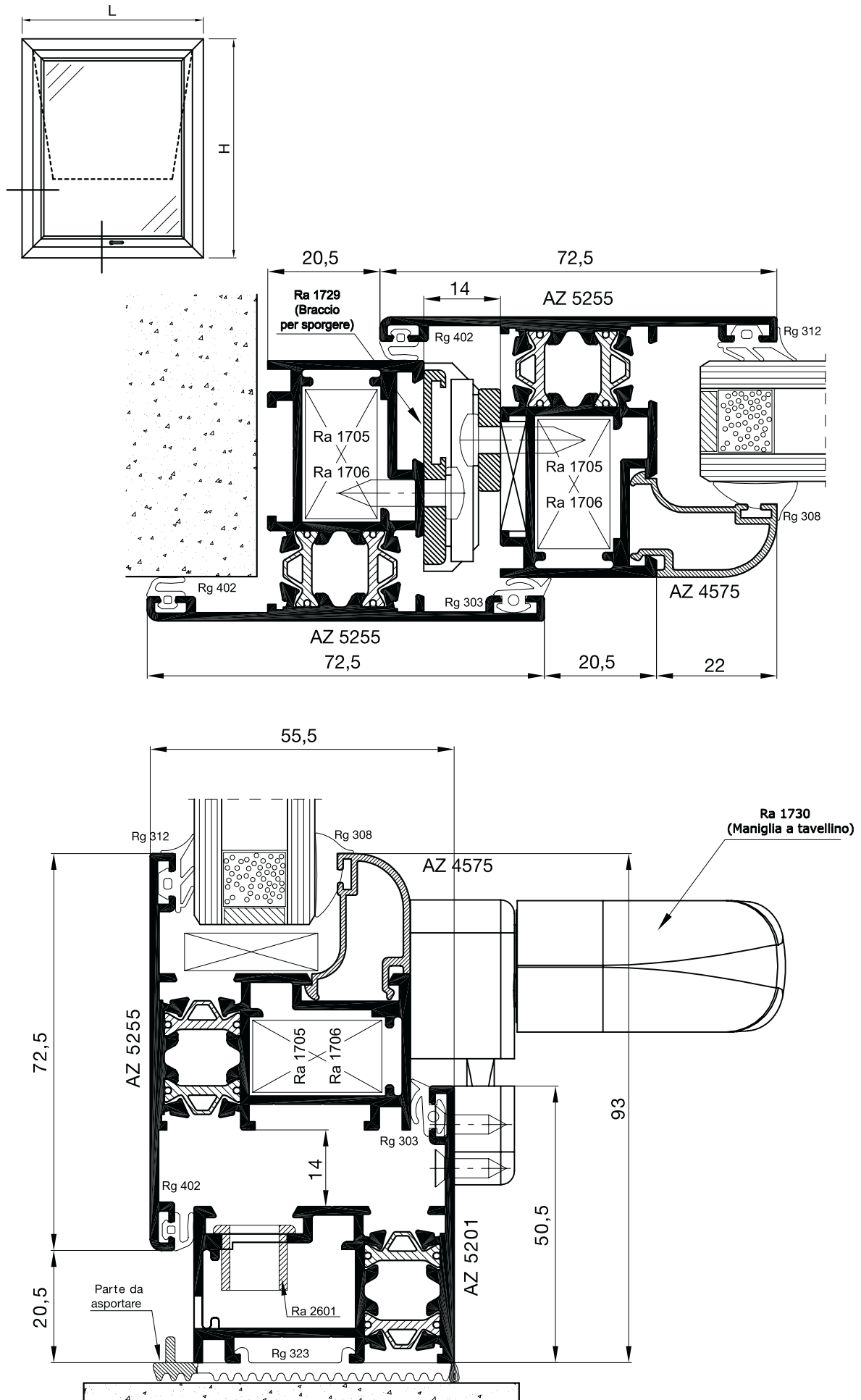


Finestra a un'anta
- apertura esterna -

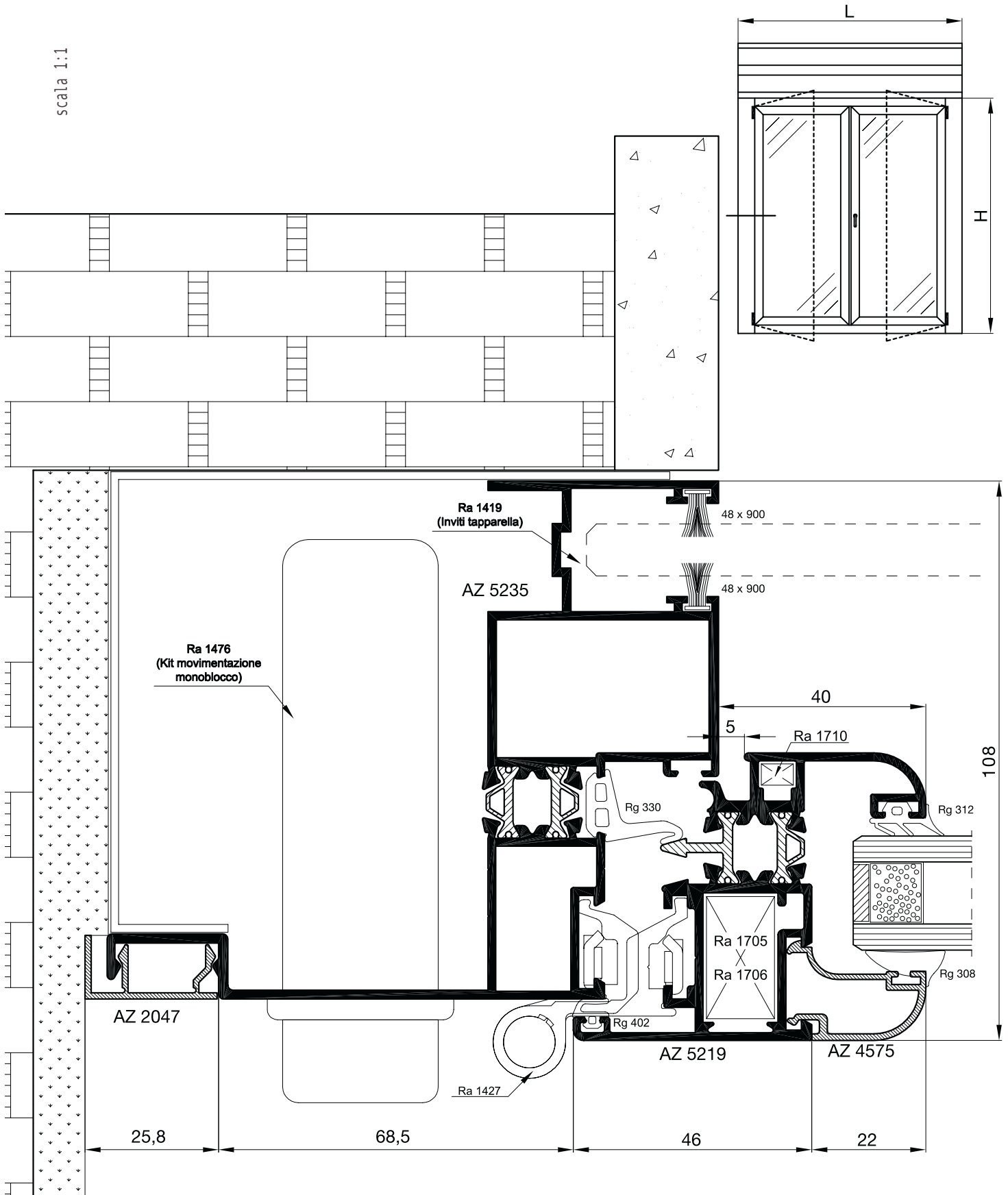


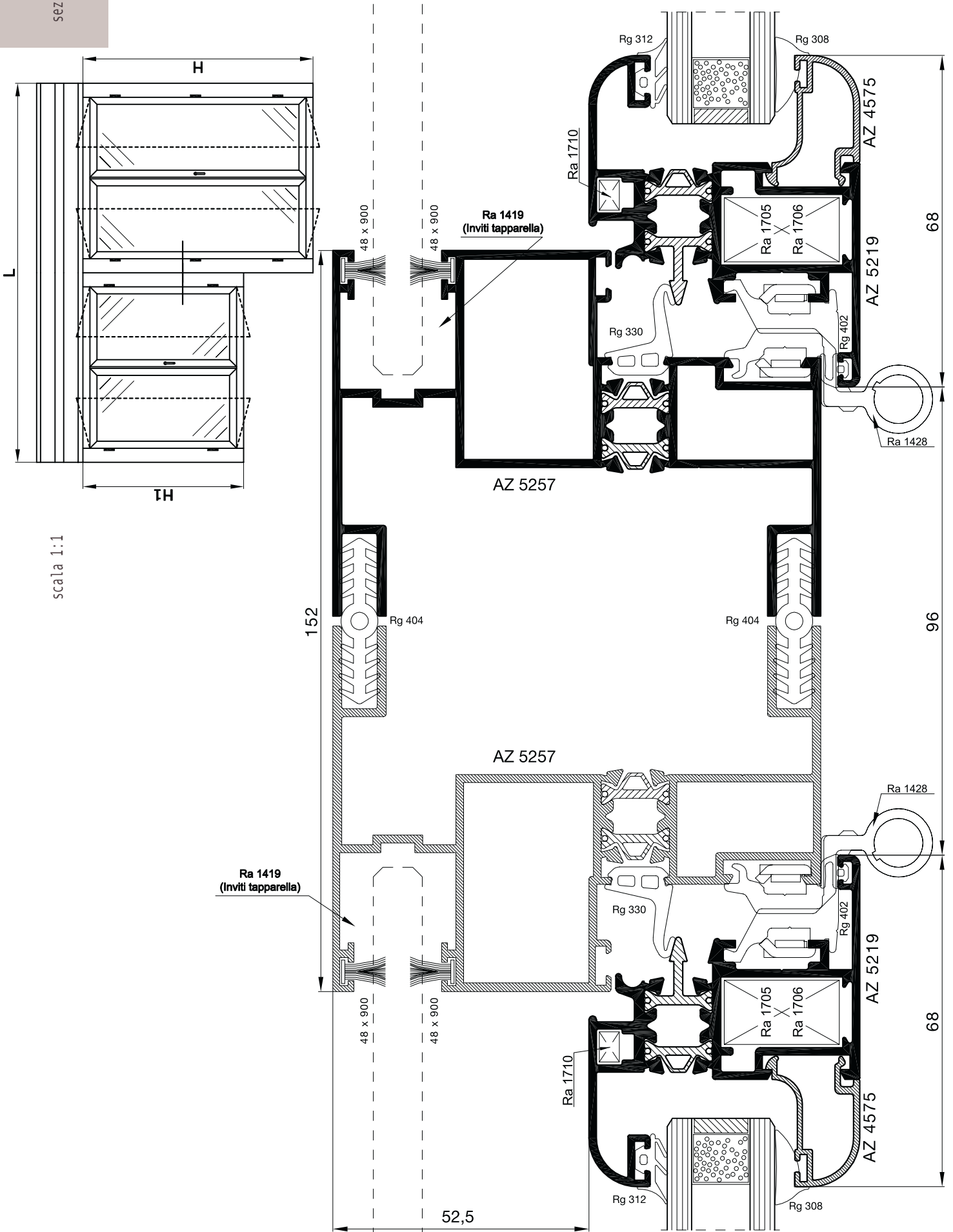






scala 1:1





scala 1:1

scala 1:1

